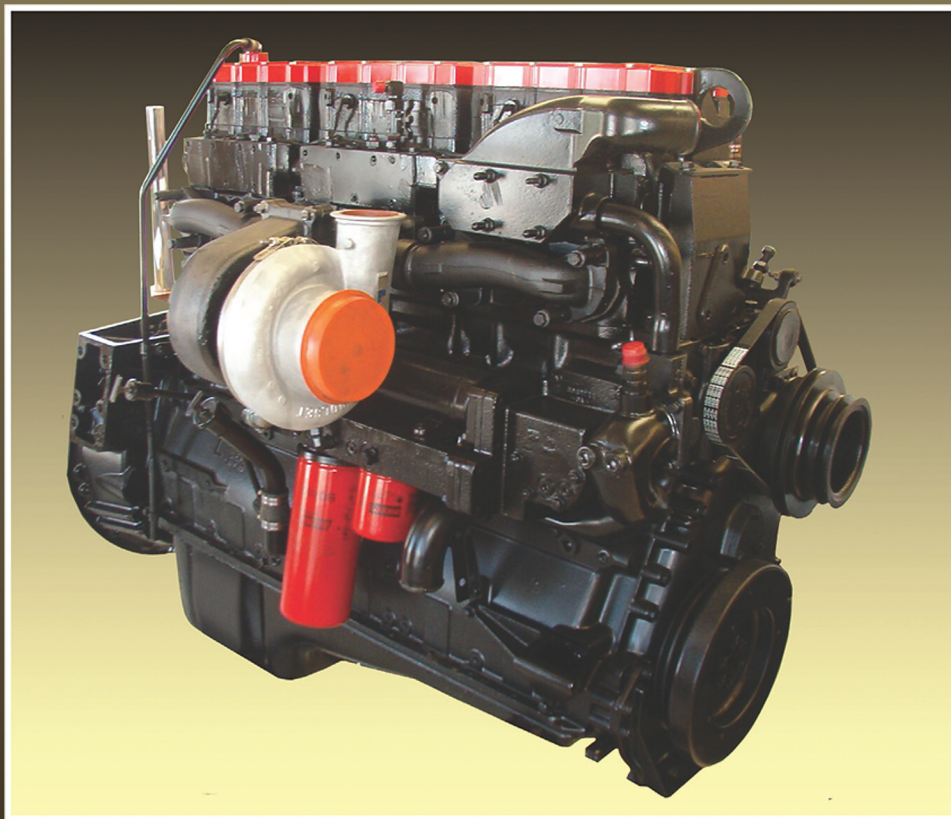




INTERSTATE-McBEE



**Replacement Parts for
Cummins®
N14 SERIES MODELS
N14 / NTA14
ENGINES**



INTERSTATE-McBEE, LLC

5300 Lakeside Avenue • Cleveland, Ohio 44114 U.S.A.
216-881-0015 • Toll Free: 1-800-321-4234 • Fax: 216-881-0805
www.interstate-mcbee.com • E-mail: sales@interstate-mcbee.com

All manufacturer's names, symbols and descriptions are for reference only
and it is not implied that any part is the product of these manufacturers.
® CUMMINS and CELECT are registered trademarks of Cummins, Inc.



INTERSTATE-McBEE



CPL Reference3- 4

N14 Parts Listing

Accessory Drive10
Air Compressor17
Cam Follower 9
Camshaft..... 9
Cooling System.....16
Crankshaft, Seals & Damper..... 7
Cylinder Components 5
Cylinder Head Components 8
Electronic Fuel Injector Components13-14
Electronic Fuel Injector Kits14
Engine Bearings 7
Engine Kits Special 5
Engine Sensors18
Fuel Injectors.....11
Fuel Injector Seals.....11
Fuel System.....11
Gasket Listing 18-19
Gasket Sets..... 6
Liner Flange Seal Rings 6
Lubrication System16
Rocker Cover, Rocker Box & Push Tubes.....10
STC Injector Components15
Turbocharger Components.....17
Turbochargers.....17

Core Return Policy.....11

Numerical Index20-24

Warranty.....25-26

INTERSTATE-McBEE, LLC

5300 Lakeside Avenue • Cleveland, Ohio 44114-3996 U.S.A.
216-881-0015 • Toll Free: 1-800-321-4234 • Fax: 216-881-0805
www.interstate-mcbee.com • E-mail: sales@interstate-mcbee.com

N14 CPL Reference

CPL #	Model	App. Code	Piston Kit	Cyl Kit	Inframe Kit	Injector	Turbo
1309§	NTA14		M-3803754	M-3803755	M-4024877	R-3069722	M-3804801
1324	N14-460E	91 A	M-3803754	M-3803755	M-4024877	R-3652541	M-3804801
1374§	N14-370	91 A	M-3803758	M-3803759	M-4024878	R-3078194	M-3804800
1380§	N14-330/350	91 A	M-3803758	M-3803759	M-4024878	R-3078197	M-3804800
1384	N14-460E	91 A	M-3803754	M-3803755	M-4024877	R-3652541	M-3804801
1385	N14-430E	91 A	M-3803754	M-3803755	M-4024877	R-3652541	M-3804801
1386	N14-430E	91 A	M-3803754	M-3803755	M-4024877	R-3652541	M-3804801
1389	N14-370E	91 A	M-3803754	M-3803755	M-4024877	R-3652541	M-3804801
1390	N14-370E	91 A	M-3803754	M-3803755	M-4024877	R-3652541	M-3804801
1391	N14-350E	91 A	M-3803754	M-3803755	M-4024877	R-3652541	M-3804801
1392	N14-330E	91 A	M-3803754	M-3803755	M-4024877	R-3652541	M-3804801
1393	N14-330E	91 A	M-3803754	M-3803755	M-4024877	R-3652541	M-3804801
1394	N14-310E	91 A	M-3803754	M-3803755	M-4024877	R-3652541	M-3804801
1395§	N14-310/330P	P	M-3803758	M-3803759	M-4024878	R-3078196	M-3804800
1405§	N14-410		M-3803758	M-3803759	M-4024878	R-3078195	M-3804801
1426	N14-410E		M-3803754	M-3803755	M-4024877	R-3652541	M-3804801
1445	N14-370E	91 A	M-3803754	M-3803755	M-4024877	R-3652541	M-3804801
1507§	N14-350P	P	M-3803758	M-3803759	M-4024878	R-3078194	M-3804800
1529§	N14-350P	P	M-3803758	M-3803759	M-4024878	R-3078197	M-3804800
1530§	NTA14-330	91 A	M-3803758	M-3803759	M-4024878	R-3078206	M-3804800
1532§	N14-330/350P	P	M-3803758	M-3803759	M-4024878	R-3078198	M-3804801
1533	N14-370E	91 A	M-3803754	M-3803755	M-4024877	R-3652541	M-3804801
1534	N14-370E	91 A	M-3803754	M-3803755	M-4024877	R-3652541	M-3804801
1535	N14-350E	91 A	M-3803754	M-3803755	M-4024877	R-3652541	M-3804801
1536	N14-330E	91 A	M-3803754	M-3803755	M-4024877	R-3652541	M-3804801
1537	N14-330E	91 A	M-3803754	M-3803755	M-4024877	R-3652541	M-3804801
1538	N14-310E	91 A	M-3803754	M-3803755	M-4024877	R-3652541	M-3804801
1540	N14-330E	91 A	M-3803754	M-3803755	M-4024877	R-3652541	M-3804801
1548	N14-460E		M-3803754	M-3803755	M-4024877	R-3652541	M-3804308
1572	N14-460E	91 A	M-3803754	M-3803755	M-4024877	R-3652542	M-3804801
1573	N14-370/410/430E	91 A	M-3803754	M-3803755	M-4024877	R-3652542	M-3804801
1574	N14-310/330/350E	91 A	M-3803754	M-3803755	M-4024877	R-3652542	M-3804801
1575	N14-460E		M-3803754	M-3803755	M-4024877	R-3652542	M-3804308
1580	N14-430/460E	91 A	M-3803754	M-3803755	M-4024877	R-3652542	M-3804308
1583	N14-370/420/430/460E		M-3803754	M-3803755	M-4024877	R-3652542	M-3804308
1607§	N14-370/410		M-3803758	M-3803759	M-4024878	R-3078195	M-3804801
1611	N14-440/500E		M-3803754	M-3803755	M-4024877	R-3081316	M-3804308
1649	N14-300E		M-3803754	M-3803755	M-4024877	R-3652542	M-3804801
1652§	N14-430		M-3803758	M-3803759	M-4024878	R-3078195	M-3804801
1807	N14-310/330/350/370E	94 A	M-3803739	M-3803740	M-4024881	R-3411759	M-3804805
1809	N14-410/435/445E	94 A	M-3803741	M-3803742	M-4024880	R-3411760	M-3800419
1809	N14-410/435/445E	94 A	M-3803741	M-3803742	M-4024880	R-3411760	M-3800395
1831	N14-430/460E	91 A	M-3803754	M-3803755	M-4024877	R-3652542	M-3804308
1833	N14-330/350E		M-3803739	M-3803740	M-4024881	R-3411765	M-3804805
1844	N14-410 to 500E	94 A	M-3803741	M-3803742	M-4024880	R-3411760	M-3800419
1844	N14-410 to 500E	94 A	M-3803741	M-3803742	M-4024880	R-3411760	M-3800395
1852	N14-500E		M-3803741	M-3803742	M-4024880	R-3411760	M-3800419
1878§	N14-430		M-3803758	M-3803759	M-4024878	R-3078195	M-3804801
1896	N14-410/435/460/500E		M-3803741	M-3803742	M-4024880	R-3411760	M-3800419
1896	N14-410/435/460/500E		M-3803741	M-3803742	M-4024880	R-3411760	M-3800395
1921§	NTA14-C	C	M-3803741	M-3803742	M-4024880	R-3084891	M-3804565

N14 CPL Reference

CPL #	Model	App. Code	Piston Kit	Cyl Kit	Inframe Kit	Injector	Turbo
1921§	NTA14-C	C	M-3803741	M-3803742	M-4024880	R-3084891	M-3804568 Wet
1924	N14-525CE	C	M-3803741	M-3803742	M-4024880	R-3411764	M-3804738
1944	N14-430/460E		M-3803754	M-3803755	M-4024877	R-3652542	M-3804308
1956§	N14-350/370		M-3803758	M-3803759	M-4024878	R-3078194	M-3804800
1957§	N14-410		M-3803758	M-3803759	M-4024878	R-3078195	M-3804801
1987	N14-350ESP		M-3803741	M-3803742	M-4024880	R-3411760	M-3800419
2003	N14-500E		M-3803741	M-3803742	M-4024880	R-3411763	M-3800419
2025	N14-525E +	A	M-3803741	M-3803742	M-4024880	R-3411763	M-3804502
2026	N14-475E +	A	M-3804630	M-3804636	M-4024879	R-3411760	M-3804502
2027	N14-425E +	A	M-3803739	M-3803740	M-4024881	R-3411761	M-3804807
2033§	NTA14-C	C	M-3803741	M-3803742	M-4024880	R-3095023	M-3804566
2033§	NTA14-C	C	M-3803741	M-3803742	M-4024880	R-3095023	M-3804569 Wet
2038§	NTA14-C	C	M-3803739	M-3803740	M-4024881	R-3095055	M-3804567
2038§	NTA14-C	C	M-3803739	M-3803740	M-4024881	R-3095055	M-3804570 Wet
2143	N14-525E		M-3803741	M-3803742	M-4024880	R-3411764	M-3804502
2228	N530E	A	M-3803741	M-3803742	M-4024880	R-3411764	M-3804502
2261	N14-525CE +	C	M-3803741	M-3803742	M-4024880	R-3411764	M-3804738
2287§	NTA14-G	G	M-3803741	M-3803742	M-4024880	R-3084891	M-3804565 Wet
2306	N530E	A	M-3803741	M-3803742	M-4024880	R-3411760	M-3804502
2330§	NTA14-C	C	M-3803739	M-3803740	M-4024881	R-3349821	M-3804805
2330§	NTA14-C	C	M-3803739	M-3803740	M-4024881	R-3349821	M-353918 Wet
2388	N14E-R	R	M-3803741	M-3803742	M-4024880	R-3411760	M-3804502
2389	NTA14-E		M-3803739	M-3803740	M-4024881	R-3411381	M-3804807
2390	N14-370/475E +		M-3803741	M-3803742	M-4024880	R-3411766	M-3804502
2391	NTA14-E		M-3803741	M-3803742	M-4024880	R-3411767	M-3804502
2398	N14-475E +		M-3804630	M-3804636	M-4024879	R-3411762	M-3804502
2403	N14-480CE	C	M-3803741	M-3803742	M-4024880	R-3088178	M-3804565
2453§	NTA14-M	M	M-3803741	M-3803742	M-4024880	R-3084891	M-3804567
2453§	NTA14-M	M	M-3803741	M-3803742	M-4024880	R-3084891	M-3804570 Wet
2492	N530E	A	M-3803741	M-3803742	M-4024880	R-3411760	M-3804502
2529§	NTA14-M	M	M-3803741	M-3803742	M-4024880	R-3084891	M-3804567
2529§	NTA14-M	M	M-3803741	M-3803742	M-4024880	R-3084891	M-3804570 Wet
2575§	N14-R	R	M-3803739	M-3803740	M-4024881	R-3095055	M-3804502
2590	NTA14-E		M-3803739	M-3803740	M-4024881	R-3411765	M-3804507
2591	N14-475E +		M-3803741	M-3803742	M-4024880	R-3411766	M-3804502
2592	NTA14-E		M-3803741	M-3803742	M-4024880	R-3411767	M-3804502
2659	N14-525CE +	C	M-3803741	M-3803742	M-4024880	R-3411764	M-3804738
2659	N14-525CE +	C	M-3803741	M-3803742	M-4024880	R-3411764	M-3537962 Wet
2861§	N14-M	M	M-3803741	M-3803742	M-4024880	R-3084891	M-4024500
2862§	N14-M	M	M-3803741	M-3803742	M-4024880	R-3084891	M-4024500
3359§	N14-C	C	M-3803741	M-3803742	M-4024880	R-4902783	M-3804565
3678§	NTA14-RG2	R	M-3803741	M-3803742	M-4024880	R-3084891	M-3804565
4260§	QSN14-C	C	M-3803741	M-3803742	M-4024880	R-3411760	
4376§	QSN14	R	M-3803741	M-3803742	M-4024880	R-3411760	R-3804502
8023§	N14-R	R	M-3803741	M-3803742	M-4024880	R-3084891	M-3804565
8433§	NTA14-G3	G	M-3803741	M-3803742	M-4024880	R-4902783	M-3804565
9921	N14-480CE	C	M-3803741	M-3803742	M-4024880	R-3411764	M-3804738
9921	N14-480CE	C	M-3803741	M-3803742	M-4024880	R-3411764	M-3537962 Wet
9925	N14-525CE +	C	M-3803741	M-3803742	M-4024880	R-3411764	M-3804738
9925	N14-525CE +	C	M-3803741	M-3803742	M-4024880	R-3411764	M-3537962 Wet
9951	N14-525CE +	C	M-3803741	M-3803742	M-4024880	R-3411764	M-3804738
9951	N14-525CE +	C	M-3803741	M-3803742	M-4024880	R-3411764	M-3537962 Wet

N14 PARTS LISTING

ENGINE KITS

Part #	QTY	Description	Comment
M-4955558	1	Inframe Kit - .020"/.040"	M-4955555 Cylinder Kit
M-4955559	1	Inframe Kit - .020"/.040"	M-4955556 Cylinder Kit
M-4955560	1	Inframe Kit - .020"/.040"	M-4955557 Cylinder Kit
MCIFN14E	1	Re-Ring Inframe Kit - 14L	w/o Crown & Skirt
MCIFN14E-S	1	Re-Ring Inframe Kit - 14L	w/ Skirt w/o Crown

CYLINDER COMPONENTS

Part #	QTY	Description	Comment
M-3803755	6	Cylinder Kit - Anodized Celect	Piston (3081268)
M-3803759	6	Cylinder Kit - Anodized STC	Piston (3081269)
M-3803740	6	Cylinder Kit - Articulated	Crown (3087635)
M-4955557	6	Cylinder Kit - Articulated	Crown (3087635) .020/.040
M-3803742	6	Cylinder Kit - Articulated	Crown (3087634)
M-4955556	6	Cylinder Kit - Articulated	Crown (3087634) .020/.040
M-3804636	6	Cylinder Kit - Articulated	Crown (3865113)
M-4955555	6	Cylinder Kit - Articulated	Crown (3865113) .020/.040
M-3803754	6	Piston Kit - Anodized Celect	Piston (3081268)
M-3803758	6	Piston Kit - Anodized STC	Piston (3081269)
M-3803739	6	Piston Kit - Articulated	Crown (3087635)
M-3803741	6	Piston Kit - Articulated	Crown (3087634)
M-3804630	6	Piston Kit - Articulated	Crown (3865113)
MCBN14SKIRT	6	Piston Skirt	
M-3801826	6	Liner Kit - STD	(M-3055099) w/ Liner Seals
M-3803219	6	Liner Kit - 20/40 OS	(M-3065405) w/ Liner Seals
M-3800174	6	Cylinder Liner Seal Kit	
M-215090	6	Crevice Seal*	
M-3032874	12	Liner O-Ring*	
M-4089489	6	Piston Ring Set	(M-3804500)
M-3064304	6	Piston Pin	
M-3064305	12	Piston Pin Retainer	
M-4058947	6	Piston Cooling Nozzle	91N14 & Up
M-4058941	6	Nozzle O-Ring	91N14 & Up

N14 PARTS LISTING

LINER FLANGE SEAL RINGS

Part #	QTY	Description	Comment
M-3054948	6	Seal Ring - .0205" Thick	Standard Liner
M-4025380	6	Seal Ring - .0225" Thick	Standard Liner
M-4025325	6	Seal Ring - .0235" Thick	Standard Liner
M-4025326	6	Seal Ring - .0245" Thick	Standard Liner
M-3019959	6	Seal Ring - .0310" Thick	Standard Liner
M-3019960	6	Seal Ring - .0620" Thick	Standard Liner
M-3066843	6	Seal Ring - .018" Thick	.020"/.040" Liner
M-3065406	6	Seal Ring - .020" Thick	.020"/.040" Liner
M-3066844	6	Seal Ring - .022" Thick	.020"/.040" Liner

GASKET SETS

Part #	QTY	Description	Comment
M-4089368	1	Upper Set	STC
M-4089371	1	Upper Set	Electronic
M-4089368EB	1	Upper Set w/Brake Gaskets	STC
M-4089371EB	1	Upper Set w/Brake Gaskets	Electronic
M-4089369	1	Upper Set - Single Head	STC
M-4089370	1	Upper Set - Single Head	Electronic w/ 6 Exhaust Gaskets
M-4089372	1	Upper Set - Single Head	Electronic w/ 3 Exhaust Gaskets
M-JB11858	1	Engine Brake Gasket Set	
M-4025069	1	Lower Set	91N14 & STC Construction
M-4025068	1	Lower Set	94N14 & Up
M-3804303	1	Oil Pan Gasket Set	
MCBN14INJ	6	Injector Seal Kit	Electronic
MCB215	1	Gear Cover Gasket Set	91N14 1.5" Drive Shaft
MCB225	1	Gear Cover Gasket Set	94N14 & Up 2.0" Drive Shaft
MCB1401	1	Oil Cooler Gasket Set	Core Replacement
MCB1402	1	Oil Cooler Gasket Set	Assembly Overhaul

N14 PARTS LISTING

ENGINE BEARINGS

Part #	QTY	Description	Comment
M-3055145	12	Connecting Rod Bearing - STD	
M-3055146	12	Connecting Rod Bearing - .010" OS	
M-3055147	12	Connecting Rod Bearing - .020" OS	
M-3055148	12	Connecting Rod Bearing - .030" OS	
M-3055149	12	Connecting Rod Bearing - .040" OS	
M-3801260	1	Main Bearing Set - STD	
M-3801261	1	Main Bearing Set - .010" OS	
M-3801262	1	Main Bearing Set - .020" OS	
M-3801263	1	Main Bearing Set - .030" OS	
M-3801264	1	Main Bearing Set - .040" OS	
M-3801106	1	Camshaft Bearing Set	
M-3011951	1	Camshaft Bushing*	#7
M-3028075	4	Camshaft Bushing*	#1,2,4,6
M-3028269	2	Camshaft Bushing*	#3,5
M-3011952	1	Camshaft Cup Plug	At rear of Cylinder Block
M-3064295	6	Connecting Rod Bushing	

Note * = Included in Camshaft Bearing Kit

CRANKSHAFT, SEALS & DAMPER

Part #	QTY	Description	Comment
M-3064291	1	Crankshaft	
M-3020183	1	Front Crankshaft Seal	Teflon
M-3006742	1	Front Crankshaft Repair Sleeve	
M-3006737	1	Rear Crankshaft Seal	Dry Housing - Teflon
M-3006738	1	Rear Crankshaft Seal	Wet Housing - Teflon
M-3006743	1	Rear Crankshaft Repair Sleeve	
M-3067616	1	Rear Crankshaft Cover Gasket	(Horseshoe)
M-3101655	1	Vibration Damper	13.5" diameter
M-204165	6	Vibration Damper Bolts	

N14 PARTS LISTING

CYLINDER HEAD COMPONENTS

Part #	QTY	Description	Comment
M-3803360	12	Valve Kit - Intake - 30°	91N14
M-3803854	12	Valve Kit - Intake - 20°	94N14 & Up
M-3054590	12	Valve Seat - Intake - 30°	91N14
M-3084020	12	Valve Seat - Intake - 20°	94N14 & Up
M-3803770	12	Valve Kit - Exhaust - 30°	91N14
M-3803726	12	Valve Kit - Exhaust - 30°	94N14 & Non-Automotive
M-3800891	12	Valve Kit - Exhaust - 45°	N14Plus Automotive
M-3069692	12	Valve Seat - Exhaust - 30°	91N14
M-3076515	12	Valve Seat - Exhaust - 20°	94N14 & Non-Automotive
M-3084041	12	Valve Seat - Exhaust - 45°	N14Plus Automotive
M-3072369	48	Valve Lock	
M-3064312	24	Valve Guide - STD	
M-3070460	24	Valve Spring	
M-4026228	24	Valve Spring Guide - Retainer	
M-3064281	24	Valve Guide Seal	
M-3070486	6	Injector Tube - STD	< 6/1997
M-3071147	6	Injector Tube - Thicker Nose	< 6/1997
M-3406702	6	Injector Tube - STD	> 6/1997
M-3007759	6	Injector Tube O-Ring	
M-147100	2	Fuel Crossover	
M-70772	12	Fuel Crossover Screw	
M-131026	12	Fuel Crossover O-Ring	
M-135308	2	Fuel Cover Plate	
M-3071161	36	Head Bolt	11/16 - 16 x 7¼ inch
M-3071075	36	Head Bolt Washer	5/8 inch
M-3007634	3	Expansion Plug	¾"
M-3007635	6	Expansion Plug	1"
M-3007636	2	Expansion Plug	1¼"
M-3027106	2	Dowel	
M-68445	6	Groove Pin	
M-S911B	10	Pipe Plug	1/8" NPT

N14 PARTS LISTING

CAMSHAFT

Part #	QTY	Description	Comment
M-3800855	1	Camshaft - STC Engines	CPL=1374, 1380, 1395, 1405, 1507, 1529, 1530, 1532, 1607, 1652, 1878, 1921, 1956, 1957, 2033, 2038, 2330, 2453, 2529, 2575, 2861, 2862, 8023
M-3803738	1	Camshaft - 94N14 & N14Plus	CPL=1807, 1809, 1833, 1844, 1852, 1896, 1987, 2003, 2025, 2026, 2143, 2306, 2388, 2389, 2398, 2492, 2590
M-4024849	1	Camshaft - N14Plus	CPL= 2390, 2391, 2591, 2592
M-215233	1	Thrust Washer	
M-3008530	1	Camshaft Support	
M-AR1176	1	Camshaft Support Shim Kit	
M-215705			
M-3011952	1	Block Plug	
MCB215	1	Gear Cover Gasket Set	91N14 1.5" Drive Shaft
MCB225	1	Gear Cover Gasket Set	94N14 & Plus 2" Drive Shaft

CAM FOLLOWER

Part #	QTY	Description	Comment
M-4025956	6	Injector Lever Roller	91N14
M-3412922	6	Injector Lever Pin	91N14
M-3036933	12	Valve Lever Roller	91N14
M-3013331	12	Valve Lever Pin	91N14
M-3161423	6	Injector Lever Roller	94N14 & Plus
M-3166388	6	Injector Lever Pin	94N14 & Plus
M-3865237	12	Valve Lever Roller	94N14 & Plus
M-3166428	12	Valve Lever Pin	94N14 & Plus
M-3064309	18	Roll Pin	
M-3064621	18	Socket	
M-205401	6	Shaft Plug	
M-3068473	3	Housing Gasket - .032"	
M-3068474	3	Housing Gasket - .037"	
M-3068475	3	Housing Gasket - .042"	
M-3068476	3	Housing Gasket - .047"	
M-3068477	3	Housing Gasket - .052"	

N14 PARTS LISTING

ROCKER COVER, ROCKER BOX & PUSH TUBES

Part #	QTY	Description	Comment
M-3066311	3	Rocker Cover Gasket	
M-3068135	3	Brake Mounting Gasket	
M-4058981	3	Rocker Box Gasket	
M-3058462	12	Bushing Valve Rocker Arm	
M-3074376	3	Rocker Shaft	
M-3074375	3	Rocker Shaft	
M-203933	6	Shaft Plug	
M-3066291	12	Valve Push Rod	
M-3067932	6	Injector Push Rod	91N14 & all STC
M-3073499	6	Injector Push Rod	94N14 & Plus

ACCESSORY DRIVE

Part #	QTY	Description	Comment
M-3078307	1	Accessory Drive Assembly	2.0" Drive 94N14 & Up w/ Iron Housing
M-3023473	1	Accessory Drive Pulley	
M-3012526	1	Pulley Nut	
M-193136	1	Washer	
M-3008947	1	Keyway Seal	
M-70550	1	Dowel Pin	
M-3004316	1	Oil Seal	1.5" Drive 91N14
M-3800616	1	Oil Seal	2.0" Drive 94N14 & Up
M-3800617	1	Oil Seal & Sleeve	2.0" Drive 94N14 & Up
M-132770	1	Drive Bushing	1.5" Drive 91N14
M-3411389	1	Drive Bushing	2.0" Drive 94N14 & Up
M-142689	1	Gear	1.5" Drive 91N14
M-3078310	1	Gear	2.0" Drive 94N14 & Up
M-3034438	1	Groove Pin	
M-3000171	1	Drive Shaft	1.5" Drive 91N14
M-3076500	1	Drive Shaft	2.0" Drive 94N14 & Up
M-3076225	1	Gasket	Drive to Cylinder Block
M-3000174	1	Spline Coupling	
M-170664	1	Spline Coupling Washer	
M-3000173	1	Spline Coupling Bolt	
M-199349	1	Sleeve Coupling	
M-3076226	1	Gasket	Compressor to Drive
M-101918	1	Jaw Hub Coupling	Compressor rear
M-3046200	1	Spider Coupling	

N14 PARTS LISTING

FUEL SYSTEM

PART #	QTY	DESCRIPTION	COMMENT
M-4024808	1	Shutdown Solenoid	12V Single Pole
M-3803282	1	STC Valve Repair Kit	
M-3803478	1	Fuel Pump Seal & Gasket Kit	Step Bore Housing
M-3803477	1	Fuel Pump Oil Seal Kit	
M-4026171	1	Fuel Pump Mounting Gasket	
M-3034243	1	Gear Fuel Pump	3/4" - STC
M-4010324	1	Gear Fuel Pump	1 1/4"
M-4954880	1	Gear Fuel Pump - 2.0 Type	Internal Cooling
M-3824010	6	Electrical Injector Connector	
M-3928624	6	Connector Seal Ring	

FUEL INJECTORS

See CPL Matrix on pages 3 & 4 for application

PART #	QTY	DESCRIPTION	CORE	COMMENT
R-3411759	6	Injector - Rebuilt	C-CELLECT3	Electronic
R-3411760	6	Injector - Rebuilt	C-CELLECT3	Electronic
R-3411761	6	Injector - Rebuilt	C-CELLECT3	Electronic
R-3411762	6	Injector - Rebuilt	C-CELLECT3	Electronic
R-3411763	6	Injector - Rebuilt	C-CELLECT3	Electronic
R-3411764	6	Injector - Rebuilt	C-CELLECT3	Electronic
R-3411765	6	Injector - Rebuilt	C-CELLECT3	Electronic
R-3411766	6	Injector - Rebuilt	C-CELLECT3	Electronic
R-3411767	6	Injector - Rebuilt	C-CELLECT3	Electronic
R-3652541	6	Injector - Rebuilt	C-CELLECT1	Electronic
R-3652542	6	Injector - Rebuilt	C-CELLECT1	Electronic

Core Return Policy

CORE RETURNS MUST MEET THE FOLLOWING CRITERIA:

- Units must be properly identified with their part number.
- Units must be returned as off of the engine – assembled and complete.
- Units damaged by fire or excessive other damage will not be acceptable.

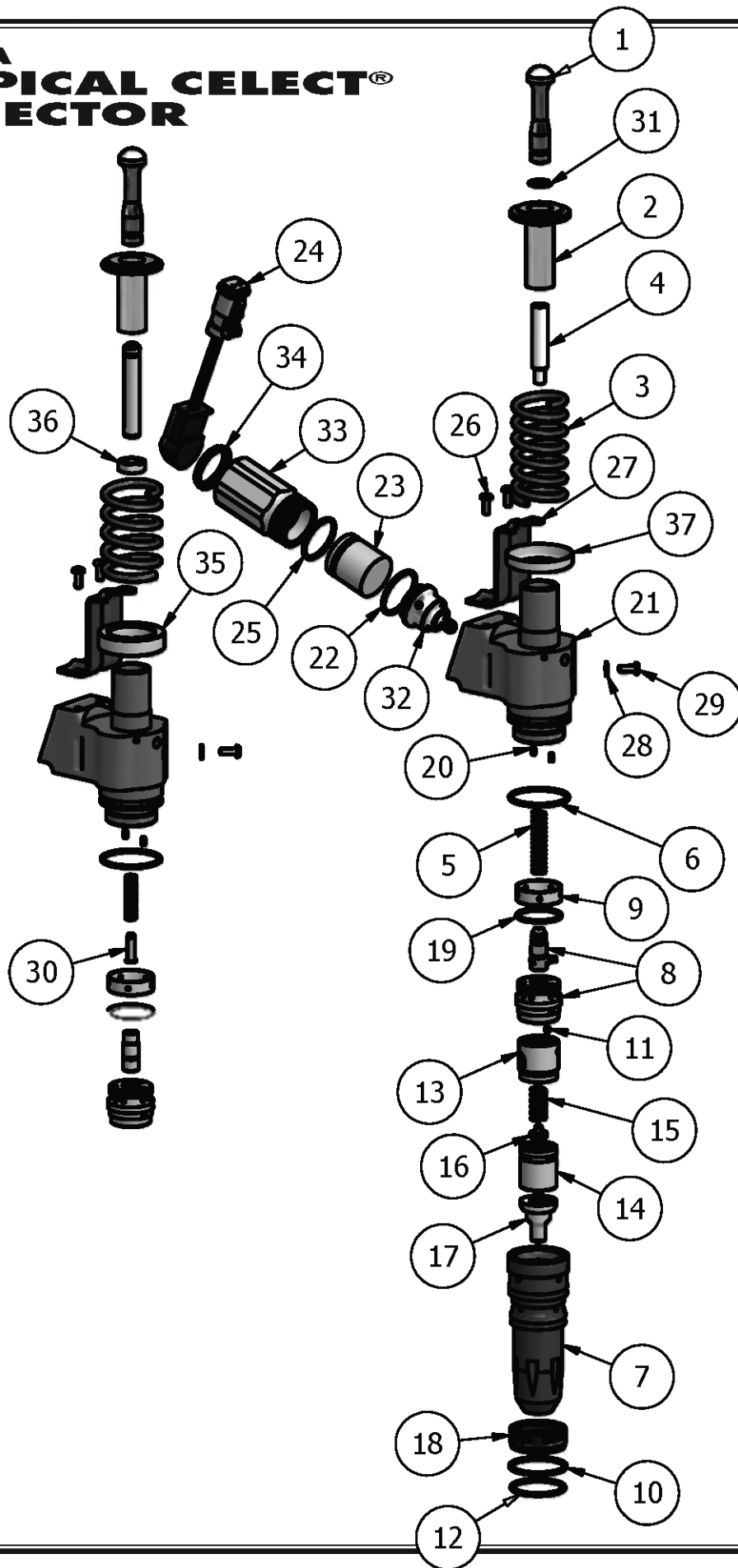
GROUP CLASSIFICATION OF CORES:

Cores will be accepted for any of the exchange injectors within the specific group classification. Unacceptable cores not meeting the above criteria will be scrapped and no credit will be issued. Copy of the original invoice or a packing slip referring to said invoice must accompany cores upon return.

CORE MUST BE RETURNED TO:

INTERSTATE-MCBEE
Attn: Core Department
4901 Lakeside Avenue
Cleveland, OH 44114

**FIG. A
TYPICAL CELECT®
INJECTOR**



N14 INJECTOR PARTS LISTING

ELECTRONIC FUEL INJECTOR COMPONENTS

FIG. A	PART #	DESCRIPTION	NOTE	QTY
1	M-3078226	Injector Plunger Link	91N14 & Up	1
1	M-3072485	Injector Plunger Link	91N14 for R-3652541 & R-3652542	1
2	M-3083863	Plunger Coupling	91N14 & Up	1
2	M-3081342	Plunger Coupling	91N14 for R-3652541 & R-3652542	1
3	M-3411340	Plunger Coupling Spring	91N14 & Up	1
3	7991021	Plunger Coupling Spring	91N14 for R-3652541 & R-3652542	1
4	M-3087552	Upper Plunger – Male	91N14 & Up	1
4	7991022	Upper Plunger – Female	91N14 for R-3652541 & R-3652542	1
5	M-3081388	Upper Plunger Spring – Male	91N14 & Up	1
5	M-3081371	Upper Plunger Spring – Female	91N14 for R-3652541 & R-3652542	1
6	M-3070136	O-Ring Seal Top	Red	1
10	M-3070137	O-Ring Seal Middle	White	1
12	M-3070138	O-Ring Seal Bottom	Blue	1
7	M-3073244	Cup Retainer		1
7	M-3070184	Cup Retainer	For R-3652541	1
8	M-3411711	Plunger and Barrel – Male	91N14 & Up	1
8	7991093	Plunger and Barrel – Female	91N14 for R-3652541 & R-3652542	1
9	M-3070113	Injector Sleeve		1
11	M-3076068	Ball Check		1
13	M-3072823	Spring Housing Spacer Assembly		1
	M-3072819	– Spring Housing Spacer		1
	M-3072822	– Socket Set Screw		1
	M-3072820	– Spring		1
	M-3072821	– Spring Guide		1
14	M-3066736	Valve Spring Housing		1
15	M-3066738	Valve Spring		1
16	M-3067426	Valve Spring Retainer		1
16	M-3067426+1	Valve Spring Retainer	Oversize .003"	1
16	M-3067426-1	Valve Spring Retainer	Undersize .003"	1
17	M-3609861	Spray Tip Assembly	Injector R-3411759	1
17	M-3609855	Spray Tip Assembly	Injector R-3411760	1
17	M-3609852	Spray Tip Assembly	Injector R-3411761	1
17	M-3409978	Spray Tip Assembly	Injector R-3411762	1
17	M-3087791	Spray Tip Assembly	Injector R-3411763	1
17	M-3088175	Spray Tip Assembly	Injector R-3411764	1
17	M-3411690	Spray Tip Assembly	Injector R-3411765	1
17	M-3411694	Spray Tip Assembly	Injector R-3411766	1
17	M-3411388	Spray Tip Assembly	Injector R-3411767	1
17	M-3076071	Spray Tip Assembly	Injectors R-3652541 & R-3654542	1
18	M-3071967	Filter Screen		1
19	M-3068959	Barrel O-Ring		1
20	7991016	Groove Pin	91N14 & Up	2
21	7991019	Injector Body	91N14 for R-3652541 & R-3652542	1
21	7991025	Injector Body		1
22	M-3034408	Control Valve O-Ring		1
23	M-3811021	Solenoid		1
24	M-3076256	Wiring Harness		1
25	M-3075658	Solenoid O-Ring		1
26	M-3075613	Socket Head Cap Screw		2
27	M-3080766	Coupling Retainer		1

N14 INJECTOR PARTS LISTING

ELECTRONIC FUEL INJECTOR COMPONENTS

FIG. A	PART #	DESCRIPTION	NOTE	QTY
28	M-3080421	Sealing Washer		1
29	M-3075613	Socket Head Cap Screw		1
30	7991066	Plunger Spring Guide		1
31	M-3072486	Link Retainer		1
32	7991123	Control Valve Assembly		1
33	7991089	Solenoid Nut		1
34	7991091	Retaining Ring		1
35	M-3080767	Spacer	91N14 for R-3652541 & R-3652542	1
36	7991026	Plunger Spacer	91N14 for R-3652541 & R-3652542	1
37	M-3411775	Spring Retainer		1

ELECTRONIC FUEL INJECTOR KITS

PART #	DESCRIPTION	CONTAINS REFERENCE NUMBER IN FIG. A	QTY
MCBN14INJ	External O-Ring Kit	6, 10, 12	1
MCB26124	External O-Ring Kit & Filter	6, 10, 12, 18	1
MCB26104	O-Ring & Harware Kit	6, 10, 12, 19, 22, 26, 28, 29	1
MCB26129	Injector Repair Kit	5, 6, 10, 12, 11, 15, 18, 19, 22, 25, 26, 28, 29	1
MCB3060001	Injector Repair Kit & Harness	5, 6, 10, 12, 11, 15, 16, 18, 19, 22, 24, 25, 26, 28, 29	1

FUEL INJECTOR SEALS

PART #	QTY	DESCRIPTION	COMMENT
M-193736	18	O-Ring Injector Body	STC
M-3001340	6	O-Ring Seal	Oil Tube to Cylinder Head Rail
M-3052587	6	O-Ring Seal	Oil Tube to Fuel Injector
M-3050867	6	Grommet Seal	Oil Tube to Top of Cylinder Head
MCBN14INJ	6	Injector Seal Kit	Electronic – External O-Ring
MCB26124	6	Injector Seal Kit & Filter	Electronic – Installation
MCB26129	6	Injector Repair Kit - Minor	Seals & Springs
MCB3060001	6	Injector Repair Kit - Major	Seals, Springs, Spring Retainer & Wire Harness
M-3076256	6	Wire Harness	

N14 INJECTOR PARTS LISTING

STC INJECTOR COMPONENTS

DESCRIPTION	PART #										
		R-3078194	R-3078195	R-3078196	R-3078197	R-3078198	R-3084891	R-3095023	R-3095055	R-3349821	
Link Retainer	M-3052231	X	X	X	X	X	X	X	X	X	X
Tappet - HVT	M-3075383	X	X	X	X	X	X	X	X	X	X
Tappet Repair Kit	M-3804700	X	X	X	X	X	X	X	X	X	X
Injector Stop Screw	M-3055742	X	X	X	X	X	X	X	X	X	X
Spring Retainer	M-3066707	X	X	X	X	X					
Spring Retainer	M-3052218						X	X	X	X	
Compression Spring - Large OD	M-3060615	X	X	X	X	X					
Compression Spring - Small OD	M-3060614	X	X	X	X	X					
Compression Spring - Large OD	M-3023478						X	X	X	X	
Compression Spring - Small OD	M-3034167						X	X	X	X	
Adaptor Injector Body	M-3066695	X	X	X	X	X					
Adaptor Injector Body	M-3023934						X	X	X	X	
Orifice Plug Gasket	M-173086	X	X	X	X	X	X	X	X	X	
Orifice Plug Screen	M-3008706	X	X	X		X					
Orifice Plug Screen	M-3054999				X		X	X	X	X	
Screen Retainer	M-174299	X	X	X	X	X	X	X	X	X	
Check Ball	M-167157	X	X	X	X	X	X	X	X	X	
Roll Pin	M-203426 (2)	X	X	X	X	X	X	X	X	X	
Plunger & Barrel	M-3069707	X	X	X	X	X					
Plunger & Barrel	M-3084892						X	X	X	X	
Injector Cup	M-3073573	X									
Injector Cup	M-3073575		X								
Injector Cup	M-3073570			X							
Injector Cup	M-3071648				X						
Injector Cup	M-3074253					X					
Injector Cup	M-3084895						X				
Injector Cup	M-3095024							X			
Injector Cup	M-3069764								X		
Injector Cup	M-3349822										X
Cup Retainer	M-3066693	X	X	X	X	X					
Cup Retainer	M-185138						X	X	X	X	

N14 PARTS LISTING

LUBRICATION SYSTEM

PART #	QTY	DESCRIPTION	COMMENT
M-3803369	1	Oil Pump	91N14 Helical Gear
M-3803698	1	Oil Pump	94N14 & Up – Spur Gear
M-3067613	1	Mounting Gasket	
M-3884126	1	Regulator Plunger	
M-3010146	1	Regulator Plunger Spring	
M-3413091	1	Oil Cooler	
MCB1401	1	Cooler Core Gasket Set	
MCB1402	1	Cooler Assembly Gasket Set	
M-3069678	2	Mounting Gasket	
M-109080	2	O-Ring Seal	
M-3072375	2	O-Ring Seal	Retainer Plate
M-3059408	1	Oil Cooler Thermostat	
M-3072341	1	Thermostat Gasket	
M-3070477	1	Support Gasket	
M-3066298	1	Support Gasket	
M-4058947	6	Piston Cooling Nozzle	91N14 & Up
M-4058941	6	Nozzle O-Ring	91N14 & Up
M-3046947	1	Oil Pan	Front Sump - Aluminum
M-3030257	1	Oil Pan	Rear Sump - Aluminum
M-3099083	1	Oil Pan Gasket	
M-3029847	1	O-Ring Seal	Tube to Oil Pan
M-3034986	1	Rectangular Seal	Tube to Oil Pan
M-157551	1	Gasket	Gasket to Oil Pump
M-3055069	1	Magnetic Drain Plug	
M-67946	1	Oil Pan Drain Plug	Washer 11/32"

COOLING SYSTEM

PART #	QTY	DESCRIPTION	COMMENT
M-3803605	1	Water Pump Assembly	
M-3803612	1	Water Pump Repair Kit - Minor	Seals & Gaskets
M-3803614	1	Water Pump Repair Kit - Major	
M-3066330	1	Idler Assembly	
M-217638	1	Belt	Poly Groove
M-3076489	1	Thermostat - 180°	91N14 & 94N14
M-3411335	1	Thermostat - 180°	91N14 & 94N14 w/ Flange Seal
M-4973373	2	Thermostat - 180°	N14 Plus
M-186780	1	Thermostat Seal	All
M-3066285	1	Gasket - Housing Cover	91N14 & 94N14
M-3865236	1	Gasket - Housing Cover	N14 Plus
M-3064313	1	Gasket - Housing Mounting	91N14 & 94N14
M-3865195	1	Gasket - Housing Mounting	N14 Plus
M-43463A	2	O-Ring Seal	Transfer Tube

N14 PARTS LISTING

TURBOCHARGERS

See CPL Matrix on pages 3 & 4 for application

PART #	QTY	DESCRIPTION	COMMENT
M-3537962	1	Turbocharger	Water Cooled Bearing Housing
M-353918	1	Turbocharger	Water Cooled Bearing Housing
M-3800395	1	Turbocharger	
M-3800419	1	Turbocharger	
M-3804308	1	Turbocharger	
M-3804502	1	Turbocharger	
M-3804507	1	Turbocharger	
M-3804565	1	Turbocharger	Water Cooled Bearing Housing
M-3804566	1	Turbocharger	
M-3804567	1	Turbocharger	
M-3804568	1	Turbocharger	Water Cooled Bearing Housing
M-3804569	1	Turbocharger	Water Cooled Bearing Housing
M-3804570	1	Turbocharger	Water Cooled Bearing Housing
M-3804738	1	Turbocharger	
M-3804800	1	Turbocharger	
M-3804801	1	Turbocharger	
M-3804805	1	Turbocharger	
M-3804807	1	Turbocharger	
M-4024500	1	Turbocharger	

TURBOCHARGER COMPONENTS

PART #	QTY	DESCRIPTION	COMMENT
M-3801523	1	Bearing & Seal Kit	BHT3C models
M-3801522	1	Seal Kit	BHT3C models
M-3069177	1	Mounting Gasket	
M-201048	1	Oil Pan Drain Gasket	
M-3037537	1	O-Ring Oil Feed	
M-3056158	4	Mounting Nut	3/8-24 UNF

N14 PARTS LISTING

AIR COMPRESSOR

PART #	QTY	DESCRIPTION	COMMENT
M-AR12719	1	Valve Repair Kit	Holset®13.2 Single
M-3801733	1	Head Repair Kit	Holset®13.2 Single
M-3801728	1	Head Repair Kit	w/ Unloader Body Holset®13.2 Single
M-3803930	1	Piston Kit - STD	91N14 13.2 Single (AR73350 Ring Set)
M-3803931	1	Piston Kit - .010" OS	91N14 13.2 Single (AR73351 Ring Set)
M-3803932	1	Piston Kit - .020" OS	91N14 13.2 Single (AR73352 Ring Set)
M-3803933	1	Piston Kit - .030" OS	91N14 13.2 Single (AR73353 Ring Set)
M-119810	1	Piston Pin	
M-3558754	2	Piston Pin Retainer	
M-3018151	1	Connecting Rod	Holset®13.2 Single
M-AR10922	1	Crankshaft	Holset®13.2 Single

ENGINE SENSORS

PART #	QTY	DESCRIPTION	COMMENT
M-4984223	1	Sensor - Position	
M-4076493	1	Sensor - Pressure	
M-4902720	1	Sensor - Pressure	
M-4921487	1	Sensor - Pressure	
M-4921493	1	Sensor - Pressure	
M-4921501	1	Sensor - Pressure	
M-3085185	1	Sensor - Temperature	
M-3865312	1	Sensor - Temperature	
M-4954905	1	Sensor - Temperature	

N14 PARTS LISTING

GASKET LISTING

DESCRIPTION	NOTE	PART#	QTY
Accessory Drive Gasket	Drive to Cylinder Block	M-3069101	1
Air Compressor Gasket	Compressor to Drive Support	M-3069102	1
Cam Follower Gasket		M-3068473	3
Cam Support O-Ring		M-215705	1
Cylinder Head Gasket	Current Edge Molded Design	M-4058790	3
Engine Brake Gasket		M-4920093	3
Exhaust Manifold Gasket		M-3020943	6
Exhaust Manifold Gasket	for Plus Engines	M-3865235	3
Fuel Pump Mounting Gasket		M-3069103	1
Gear Cover Gasket	Cover to Cylinder Block	M-4058949	1
Hand Hole Gasket		M-3068466	1
Hydraulic Pump Gasket		M-3558515	1
Injector O-Ring	STC	M-193736	18
Injector O-Ring	Electric - Top - Red	M-3070136	6
Injector O-Ring	Electric - Middle - White	M-3070137	6
Injector O-Ring	Electric - Bottom - Blue	M-3070138	6
Intake Manifold Gasket		M-3008591	3
Oil Filter Head Gasket		M-3070478	1
Oil Pan Drain Gasket	Washer 11/32"	M-67946	1
Oil Pan Gasket		M-3099083	1
Oil Pump Cover Gasket		M-3014778	1
Oil Pump Mounting Gasket		M-3067613	1
Oil Transfer Tube Gasket		M-157551	1
Oil Transfer Tube O-Ring	Tube to Pick Up	M-3029847	1
Oil Transfer Tube Seal	Rectangular	M-3034986	1
Piston Nozzle O-Ring		M-3068527	6
Rear Seal Cover Gasket		M-3067616	1
Rocker Box Gasket	Box to Head	M-4058981	3
Rocker Cover Gasket		M-3066311	3
Thermostat Housing Gasket	Housing Mounting	M-3064313	1
Thermostat Housing Gasket	Cover to Housing	M-3066285	1
Thermostat Housing Gasket	Housing Mounting - Double Stat	M-3865236	1
Thermostat Housing Gasket	Cover to Housing - Double Stat	M-3865195	1
Thermostat Housing O-Ring	on Transfer Tube	M-43463A	2
Thermostat Seal		M-186780	1
Turbo Intake Seal	Rectangular	M-3068510	1
Turbo Mounting Gasket		M-3069177	1
Turbo Oil Drain Gasket		M-201048	1
Turbo Oil Feed O-Ring		M-3037537	1
Turbo Outlet Seal		M-3066211	1
Water Pump Gasket		M-3076522	1

NUMERICAL INDEX

Part #	Description	Page	Part #	Description	Page
7991016	Groove Pin	13	M-3006743	Rear Crankshaft Repair Sleeve	7
7991019	Injector Body	13	M-3007634	Expansion Plug	8
7991021	Plunger Coupling Spring	13	M-3007635	Expansion Plug	8
7991022	Upper Plunger – Female	13	M-3007636	Expansion Plug	8
7991025	Injector Body	13	M-3007759	Injector Tube O-Ring	8
7991026	Plunger Spacer	14	M-3008530	Camshaft Support	9
7991066	Plunger Spring Guide	14	M-3008591	Intake Manifold Gasket	18
7991089	Solenoid Nut	14	M-3008706	Orifice Plug Screen	15
7991091	Retaining Ring	14	M-3008947	Keyway Seal	10
7991093	Plunger and Barrel – Female	13	M-3010146	Regulator Plunger Spring	14
7991123	Control Valve Assembly	14	M-3011951	Camshaft Bushing	7
M-101918	Jaw Hub Coupling	10	M-3011952	Camshaft Cup Plug	7, 9
M-109080	O-Ring Seal	14	M-3012526	Pulley Nut	10
M-119810	Piston Pin	17	M-3013331	Valve Lever Pin	9
M-131026	Fuel Crossover O-Ring	8	M-3014778	Oil Pump Cover Gasket	18
M-132770	Drive Bushing	10	M-3018151	Connecting Rod	17
M-135308	Fuel Cover Plate	8	M-3019959	Seal Ring - .0310" Thick	6
M-142689	Gear	10	M-3019960	Seal Ring - .0620" Thick	6
M-147100	Fuel Crossover	8	M-3020183	Front Crankshaft Seal	7
M-157551	Oil Transfer Tube Gasket	14, 18	M-3020943	Exhaust Manifold Gasket	18
M-167157	Check Ball	15	M-3023473	Accessory Drive Pulley	10
M-170664	Spline Coupling Washer	10	M-3023478	Compression Spring - Large OD	15
M-173086	Orifice Plug Gasket	15	M-3023934	Adaptor Injector Body	15
M-174299	Screen Retainer	15	M-3027106	Dowel	8
M-185138	Cup Retainer	15	M-3028075	Camshaft Bushing	7
M-186780	Thermostat Seal	16, 18	M-3028269	Camshaft Bushing	7
M-193136	Washer	10	M-3029847	Oil Transfer Tube O-Ring	14, 18
M-193736	O-Ring Injector Body	11, 18	M-3030257	Oil Pan	14
M-199349	Sleeve Coupling	10	M-3032874	Liner O-Ring	5
M-201048	Turbo Oil Drain Gasket	17, 18	M-3034167	Compression Spring - Small OD	15
M-203426	Roll Pin	15	M-3034243	Gear Fuel Pump	11
M-203933	Shaft Plug	10	M-3034408	Control Valve O-Ring	13
M-204165	Vibration Damper Bolts	7	M-3034438	Groove Pin	10
M-205401	Shaft Plug	9	M-3034986	Oil Transfer Tube Seal	14, 18
M-215090	Crevice Seal	5	M-3036933	Valve Lever Roller	9
M-215233	Thrust Washer	9	M-3037537	Turbo Oil Feed O-Ring	17, 18
M-215705	Cam Support O-Ring	9, 18	M-3046200	Spider Coupling	10
M-217638	Belt	16	M-3046947	Oil Pan	14
M-3000171	Drive Shaft	10	M-3050867	Grommet Seal	11
M-3000173	Spline Coupling Bolt	10	M-3052218	Spring Retainer	15
M-3000174	Spline Coupling	10	M-3052231	Link Retainer	15
M-3001340	O-Ring Seal	11	M-3052587	O-Ring Seal	11
M-3004316	Oil Seal	10	M-3054590	Intake Seat - 30°	8
M-3006737	Rear Crankshaft Seal	7	M-3054948	Seal Ring - .0205" Thick	6
M-3006738	Rear Crankshaft Seal	7	M-3054999	Orifice Plug Screen	15
M-3006742	Front Crankshaft Repair Sleeve	7	M-3055069	Magnetic Drain Plug	14

NUMERICAL INDEX

Part #	Description	Page	Part #	Description	Page
M-3006743	Rear Crankshaft Repair Sleeve	7	M-3055145	Connecting Rod Bearing - STD	7
M-3007634	Expansion Plug	8	M-3055146	Connecting Rod Bearing - .010"	7
M-3007635	Expansion Plug	8	M-3055147	Connecting Rod Bearing - .020"	7
M-3007636	Expansion Plug	8	M-3055148	Connecting Rod Bearing - .030"	7
M-3007759	Injector Tube O-Ring	8	M-3055149	Connecting Rod Bearing - .040"	7
M-3008530	Camshaft Support	9	M-3055742	Injector Stop Screw	15
M-3008591	Intake Manifold Gasket	18	M-3056158	Mounting Nut	17
M-3008706	Orifice Plug Screen	15	M-3058462	Bushing Valve Rocker Arm	10
M-3008947	Keyway Seal	10	M-3059408	Oil Cooler Thermostat	14
M-3010146	Regulator Plunger Spring	14	M-3060614	Compression Spring - Small OD	15
M-3011951	Camshaft Bushing	7	M-3060615	Compression Spring - Large OD	15
M-3011952	Camshaft Cup Plug	7, 9	M-3064281	Valve Guide Seal	8
M-3012526	Pulley Nut	10	M-3064291	Crankshaft	7
M-3013331	Valve Lever Pin	9	M-3064295	Connecting Rod Bushing	7
M-3014778	Oil Pump Cover Gasket	18	M-3064304	Piston Pin	5
M-3018151	Connecting Rod	17	M-3064305	Piston Pin Retainer	5
M-3019959	Seal Ring - .0310" Thick	6	M-3064309	Roll Pin	9
M-3019960	Seal Ring - .0620" Thick	6	M-3064312	Valve Guide - STD	8
M-3020183	Front Crankshaft Seal	7	M-3064313	Thermostat Housing Gasket	16, 18
M-3020943	Exhaust Manifold Gasket	18	M-3064621	Socket	9
M-3023473	Accessory Drive Pulley	10	M-3065406	Seal Ring - .020" Thick	6
M-3023478	Compression Spring - Large OD	15	M-3066211	Outlet Seal	18
M-3023934	Adaptor Injector Body	15	M-3066285	Thermostat Housing Gasket	16, 18
M-3027106	Dowel	8	M-3066291	Valve Push Rod	10
M-3028075	Camshaft Bushing	7	M-3066298	Support Gasket	14
M-3028269	Camshaft Bushing	7	M-3066311	Rocker Cover Gasket	10, 18
M-3029847	Oil Transfer Tube O-Ring	14, 18	M-3066330	Idler Assembly	16
M-3030257	Oil Pan	14	M-3066693	Cup Retainer	15
M-3032874	Liner O-Ring	5	M-3066695	Adaptor Injector Body	15
M-3034167	Compression Spring - Small OD	15	M-3066707	Spring Retainer	15
M-3034243	Gear Fuel Pump	11	M-3066736	Valve Spring Housing	13
M-3034408	Control Valve O-Ring	13	M-3066738	Valve Spring	13
M-3034438	Groove Pin	10	M-3066843	Seal Ring - .018" Thick	6
M-3034986	Oil Transfer Tube Seal	14, 18	M-3066844	Seal Ring - .022" Thick	6
M-3036933	Valve Lever Roller	9	M-3067426	Valve Spring Retainer	13
M-3037537	Turbo Oil Feed O-Ring	17, 18	M-3067426+1	Valve Spring Retainer	13
M-3046200	Spider Coupling	10	M-3067426-1	Valve Spring Retainer	13
M-3046947	Oil Pan	14	M-3067613	Oil Pump Mounting Gasket	14, 18
M-3050867	Grommet Seal	11	M-3067616	Rear Crankshaft Cover Gasket	7, 18
M-3052218	Spring Retainer	15	M-3067932	Injector Push Rod	10
M-3052231	Link Retainer	15	M-3068135	Brake Mounting Gasket	10
M-3052587	O-Ring Seal	11	M-3068466	Hand Hole Gasket	18
M-3054590	Intake Seat - 30°	8	M-3068473	Housing Gasket - .032"	9, 18
M-3054948	Seal Ring - .0205" Thick	6	M-3068474	Housing Gasket - .037"	9
M-3054999	Orifice Plug Screen	15	M-3068475	Housing Gasket - .042"	9
M-3055069	Magnetic Drain Plug	14	M-3068476	Housing Gasket - .047"	9

NUMERICAL INDEX

Part #	Description	Page	Part #	Description	Page
M-3068477	Housing Gasket - .052"	9	M-3075658	Solenoid O-Ring	13
M-3068510	Turbo Intake Seal	18	M-3076068	Ball Check	13
M-3068527	Piston Nozzle O-Ring	18	M-3076071	Spray Tip Assembly	13
M-3068959	Barrel O-Ring	13	M-3076225	Gasket	10
M-3069101	Accessory Drive Gasket	18	M-3076226	Gasket	10
M-3069102	Air Compressor Gasket	18	M-3076256	Wire Harness	11, 13
M-3069103	Fuel Pump Mounting Gasket	18	M-3076489	Thermostat - 180°	16
M-3069177	Turbo Mounting Gasket	17, 18	M-3076500	Drive Shaft	10
M-3069678	Mounting Gasket	14	M-3076515	Exhaust Seat - 30°	8
M-3069692	Exhaust Seat - 30°	8	M-3076522	Water Pump Gasket	18
M-3069707	Plunger & Barrel	15	M-3078226	Injector Plunger Link	13
M-3069764	Injector Cup	15	M-3078307	Accessory Drive Assembly	10
M-3070113	Injector Sleeve	13	M-3078310	Gear	10
M-3070136	Injector O-Ring - Top	13, 18	M-3080421	Sealing Washer	14
M-3070137	Injector O-Ring - Middle	13, 18	M-3080766	Coupling Retainer	13
M-3070138	Injector O-Ring - Bottom	13, 18	M-3080767	Spacer	14
M-3070184	Cup Retainer	13	M-3081342	Plunger Coupling	13
M-3070460	Valve Spring	8	M-3081371	Upper Plunger Spring – Female	13
M-3070477	Support Gasket	14	M-3081388	Upper Plunger Spring – Male	13
M-3070478	Oil Filter Head Gasket	18	M-3083863	Plunger Coupling	13
M-3070486	Injector Tube - STD	8	M-3084020	Intake Seat - 20°	8
M-3071075	Head Bolt Washer	8	M-3084041	Exhaust Seat - 45°	8
M-3071147	Injector Tube - Thicker Nose	8	M-3084892	Plunger & Barrel	15
M-3071161	Head Bolt	8	M-3084895	Injector Cup	15
M-3071648	Injector Cup	15	M-3085185	Sensor - Temperature	17
M-3071967	Filter Screen	13	M-3087552	Upper Plunger – Male	13
M-3072341	Thermostat Gasket	14	M-3087791	Spray Tip Assembly	13
M-3072369	Valve Lock	8	M-3088175	Spray Tip Assembly	13
M-3072375	O-Ring Seal	14	M-3095024	Injector Cup	15
M-3072485	Injector Plunger Link	13	M-3099083	Oil Pan Gasket	14, 18
M-3072486	Link Retainer	14	M-3101655	Vibration Damper	7
M-3072819	Spring Housing Spacer	13	M-3161423	Injector Lever Roller	9
M-3072820	Spring	13	M-3166388	Injector Lever Pin	9
M-3072821	Spring Guide	13	M-3166428	Valve Lever Pin	9
M-3072822	Socket Set Screw	13	M-3349822	Injector Cup	15
M-3072823	Spring Housing Spacer Assy	13	M-3406702	Injector Tube - STD	8
M-3073244	Cup Retainer	13	M-3409978	Spray Tip Assembly	13
M-3073499	Injector Push Rod	10	M-3411335	Thermostat - 180°	16
M-3073570	Injector Cup	15	M-3411340	Plunger Coupling Spring	13
M-3073573	Injector Cup	15	M-3411388	Spray Tip Assembly	13
M-3073575	Injector Cup	15	M-3411389	Drive Bushing	10
M-3074253	Injector Cup	15	M-3411690	Spray Tip Assembly	13
M-3074375	Rocker Shaft	10	M-3411694	Spray Tip Assembly	13
M-3074376	Rocker Shaft	10	M-3411711	Plunger and Barrel – Male	13
M-3075383	Tappet - HVT	15	M-3411775	Spring Retainer	14
M-3075613	Socket Head Cap Screw	13, 14	M-3412922	Injector Lever Pin	9

NUMERICAL INDEX

Part #	Description	Page	Part #	Description	Page
M-3413091	Oil Cooler	14	M-3803770	Exhaust Valve Kit - 30°	8
M-3537962	Turbocharger	16	M-3803854	Intake Valve Kit - 20°	8
M-353918	Turbocharger	16	M-3803930	Piston Kit - STD	17
M-3558515	Hydraulic Pump Gasket	18	M-3803931	Piston Kit - .010" OS	17
M-3558754	Piston Pin Retainer	17	M-3803932	Piston Kit - .020" OS	17
M-3609852	Spray Tip Assembly	13	M-3803933	Piston Kit - .030" OS	17
M-3609855	Spray Tip Assembly	13	M-3804303	Oil Pan Gasket Set	6
M-3609861	Spray Tip Assembly	13	M-3804308	Turbocharger	16
M-3800174	Cylinder Liner Seal Kit	5	M-3804502	Turbocharger	16
M-3800395	Turbocharger	16	M-3804507	Turbocharger	16
M-3800419	Turbocharger	16	M-3804565	Turbocharger	16
M-3800616	Oil Seal	10	M-3804566	Turbocharger	16
M-3800617	Oil Seal & Sleeve	10	M-3804567	Turbocharger	16
M-3800855	Camshaft - STC Engines	9	M-3804568	Turbocharger	16
M-3800891	Exhaust Valve Kit - 45°	8	M-3804569	Turbocharger	16
M-3801106	Camshaft Bearing Set	7	M-3804570	Turbocharger	16
M-3801260	Main Bearing Set - STD	7	M-3804630	Piston Kit - Articulated	5
M-3801261	Main Bearing Set - .010" OS	7	M-3804636	Cylinder Kit - Articulated	5
M-3801262	Main Bearing Set - .020" OS	7	M-3804700	Tappet Repair Kit	15
M-3801263	Main Bearing Set - .030" OS	7	M-3804738	Turbocharger	16
M-3801264	Main Bearing Set - .040" OS	7	M-3804800	Turbocharger	16
M-3801522	Seal Kit	17	M-3804801	Turbocharger	16
M-3801523	Bearing & Seal Kit	17	M-3804805	Turbocharger	16
M-3801728	Head Repair Kit	17	M-3804807	Turbocharger	16
M-3801733	Head Repair Kit	17	M-3811021	Solenoid	13
M-3801826	Liner Kit - STD	5	M-3824010	Electrical Injector Connector	11
M-3803219	Liner Kit - 20/40 OS	5	M-3865195	Thermostat Housing Gasket	16, 18
M-3803282	STC Valve Repair Kit	11	M-3865235	Exhaust Manifold Gasket	18
M-3803360	Intake Valve Kit - 30°	8	M-3865236	Thermostat Housing Gasket	16, 18
M-3803369	Oil Pump	14	M-3865237	Valve Lever Roller	9
M-3803477	Fuel Pump Oil Seal Kit	11	M-3865312	Sensor - Temperature	17
M-3803478	Fuel Pump Seal & Gasket Kit	11	M-3884126	Regulator Plunger	14
M-3803605	Water Pump Assembly	16	M-3928624	Connector Seal Ring	11
M-3803612	Water Pump Repair Kit - Minor	16	M-4010324	Gear Fuel Pump	11
M-3803614	Water Pump Repair Kit - Major	16	M-4024500	Turbocharger	16
M-3803698	Oil Pump	14	M-4024808	Shutdown Solenoid	11
M-3803726	Exhaust Valve Kit - 30°	8	M-4024849	Camshaft - N14Plus	9
M-3803738	Camshaft - 94N14 & N14Plus	9	M-4025068	Lower Set	6
M-3803739	Piston Kit - Articulated	5	M-4025069	Lower Set	6
M-3803740	Cylinder Kit - Articulated	5	M-4025325	Seal Ring - .0235" Thick	6
M-3803741	Piston Kit - Articulated	5	M-4025326	Seal Ring - .0245" Thick	6
M-3803742	Cylinder Kit - Articulated	5	M-4025380	Seal Ring - .0225" Thick	6
M-3803754	Piston Kit - Anodized Celect	5	M-4025956	Injector Lever Roller	9
M-3803755	Cylinder Kit - Anodized Celect	5	M-4026171	Fuel Pump Mounting Gasket	11
M-3803758	Piston Kit - Anodized STC	5	M-4026228	Valve Spring Guide - Retainer	8
M-3803759	Cylinder Kit - Anodized STC	5	M-4058790	Cylinder Head Gasket	18

NUMERICAL INDEX

Part #	Description	Page	Part #	Description	Page
M-4058941	Nozzle O-Ring	5, 14	MCIFN14E	Re-Ring Inframe Kit - 14L	5
M-4058947	Piston Cooling Nozzle	5, 14	MCIFN14E-S	Re-Ring Inframe Kit - 14L	5
M-4058949	Gear Cover Gasket	18	M-JB11858	Engine Brake Gasket Set	6
M-4058981	Rocker Box Gasket	10, 18	M-S911B	Pipe Plug	8
M-4076493	Sensor - Pressure	17	R-3411759	Injector - Rebuilt	11
M-4089368	Upper Set	6	R-3411760	Injector - Rebuilt	11
M-4089368EB	Upper Set w/Brake Gaskets	6	R-3411761	Injector - Rebuilt	11
M-4089369	Upper Set - Single Head	6	R-3411762	Injector - Rebuilt	11
M-4089370	Upper Set - Single Head	6	R-3411763	Injector - Rebuilt	11
M-4089371	Upper Set	6	R-3411764	Injector - Rebuilt	11
M-4089371EB	Upper Set w/Brake Gaskets	6	R-3411765	Injector - Rebuilt	11
M-4089372	Upper Set - Single Head	6	R-3411766	Injector - Rebuilt	11
M-4089489	Piston Ring Set	5	R-3411767	Injector - Rebuilt	11
M-43463A	Thermostat Housing O-Ring	16, 18	R-3652541	Injector - Rebuilt	11
M-4902720	Sensor - Pressure	17	R-3652542	Injector - Rebuilt	11
M-4920093	Engine Brake Gasket	18			
M-4921487	Sensor - Pressure	17			
M-4921493	Sensor - Pressure	17			
M-4921501	Sensor - Pressure	17			
M-4954880	Gear Fuel Pump - 2.0 Type	11			
M-4954905	Sensor - Temperature	17			
M-4955555	Cylinder Kit - Articulated	5			
M-4955556	Cylinder Kit - Articulated	5			
M-4955557	Cylinder Kit - Articulated	5			
M-4955558	Inframe Kit - .020"/.040"	5			
M-4955559	Inframe Kit - .020"/.040"	5			
M-4955560	Inframe Kit - .020"/.040"	5			
M-4973373	Thermostat - 180°	16			
M-67946	Oil Pan Drain Plug Gasket	14, 18			
M-68445	Groove Pin	8			
M-70550	Dowel Pin	10			
M-70772	Fuel Crossover Screw	8			
M-AR10922	Crankshaft	17			
M-AR1176	Camshaft Support Shim Kit	9			
M-AR12719	Valve Repair Kit	17			
MCB1401	Oil Cooler Core Gasket Set	6, 14			
MCB1402	Oil Cooler Assembly Gasket Set	6, 14			
MCB215	Gear Cover Gasket Set	6, 9			
MCB225	Gear Cover Gasket Set	6, 9			
MCB26104	O-Ring & Hardware Kit	14			
MCB26124	Injector External Seal Kit & Filter	11, 14			
MCB26129	Injector Repair Kit - Minor	11, 14			
MCB3060001	Injector Repair Kit - Major	11, 14			
MCBN14INJ	Injector External Seal Kit	6, 11, 14			
MCBN14SKIRT	Piston Skirt	5			

**– New Replacement Parts for CUMMINS®
N14 SERIES MODELS N14 / NTA14 ENGINES**



INTERSTATE-McBEE



Interstate-McBee, LLC LIMITED General Products Warranty

- All Fuel Injection, New & Remanufactured
- Engine Management Systems & Components

COVERAGE

The parts furnished by Interstate-McBee are warranted to be free from defects in material and workmanship under normal use and service for a period of twelve (12) months (unlimited miles and hours), from date of first installation in an engine. This warranty applies to all owners in the chain of distribution, i.e. distributor, dealer, original owner, until the end of the respective periods of coverage and shall not apply to subsequent owners.

This warranty does not apply to parts provided by Interstate Interstate-McBee on a no-charge basis. In no event shall this warranty extend beyond twenty four (24) months from date of sale or manufacture.

INTERSTATE-McBEE RESPONSIBILITIES

The obligation of Interstate-McBee under this warranty, statutory or otherwise, is limited to the replacement or repair of Interstate-McBee parts, which our inspection discloses to our satisfaction to have been defective. Repair will be performed at our factory in Cleveland, OH or other Interstate-McBee approved facility. Proof of purchase is required.

OWNER'S RESPONSIBILITIES

Owner is responsible for the operation and maintenance of the engine as specified in the APPLICABLE O.E.M. OPERATION AND MAINTENANCE MANUALS. Owner must give notice within (30) days of any suspected failure and before expiration of applicable warranty to be considered warrantable. Owner will provide alleged defective and associated parts for examination by Interstate-McBee and, if requested, return same F.O.B. Cleveland, Ohio. Interstate-McBee further reserves the right to examine any engine subject to a claim under this warranty. Owner is responsible for all costs, including, but not limited to, repairs made to items other than the engine in which the parts are installed, "downtime" expenses and all business costs and losses resulting from a warrantable failure. Copies of all work orders and invoices for repairs to the engine must accompany the claim. Additionally, on electronically controlled engines a complete Electronic Control Module (ECM) report (Extraction, Download) must also accompany the claim. ALL CLAIMS MUST BE FILED ONLINE AT WWW.INTERSTATE-McBEE.COM.

WARRANTY LIMITATIONS

Interstate-McBee is not responsible for failure resulting from owner or operator abuse or neglect, such as, but not limited to: operation without adequate coolant, fuel or lubricants; over-speeding; lack of maintenance of lubricating system, coolant or air intake systems; improper storage, or starting. Interstate-McBee is not responsible for failures resulting from improper repair or installation, for parts that have been altered or for parts not approved by Interstate-McBee. This warranty does not apply to parts furnished on a no charge basis. Interstate-McBee does not warrant parts supplied by Interstate-McBee which bear the name and or trademark of another company. These parts are warranted by their manufacturers and not by Interstate-McBee. In no event shall this warranty extend beyond (twenty four (24) months from the date of sale. THERE ARE NO WARRANTIES EXPRESSED, IMPLIED OR STATUTORY, FOR THE PARTS NAMED HEREIN BEFORE, MADE BY INTERSTATE-McBEE OTHER THAN SET FORTH HEREIN. We neither assume nor authorize any other persons to assume for us any other liability in connection with our products. INTERSTATE-McBEE SHALL NOT BE RESPONSIBLE FOR ANY OTHER CONSEQUENTIAL DAMAGES OR CONTINGENT LIABILITIES. Further, in no event shall Interstate-McBee bear any responsibility for any damages, which exceed the then available aggregate coverage provided under the terms and conditions of its product liability policy.

This warranty shall be interpreted, governed and enforced in accordance with the laws of the State of Ohio, U.S.A. (For products not covered herein, see Interstate-McBee's Extended Warranty). Any actions or proceedings relating to this warranty must be filed or commenced within three (3) months of the alleged breach. If any of these warranty provisions or portions thereof is prohibited by law or by any court of competent jurisdiction, in any locality, its invalidity or unenforceability shall not affect the validity or the enforceability of any other warranty provisions or portions thereof.

INTERSTATE-McBEE, LLC 4901 LAKESIDE AVENUE, CLEVELAND, OHIO 44114-3996

ev.: C Date: 3/11/14 Policy No.: Q-POL-75-0211



INTERSTATE-McBEE



— New Replacement Parts for CUMMINS® N14 SERIES MODELS N14 / NTA14 ENGINES

Interstate-McBee, LLC LIMITED Extended Warranty
• Engine Parts

COVERAGE

Diesel Engine

New engine parts furnished by Interstate-McBee are warranted to be free from defects in material and workmanship under normal use and service for a period of twenty-four (24) months from the date of installation, without mileage or hour limitation. This warranty applies to all owners in the chain of distribution, i.e. distributor, dealer, original owner, until the end of the respective periods of coverage and shall not apply to subsequent owners.

Natural Gas or Methane Engine and Prime Power Generation

New engine parts furnished by Interstate-McBee are warranted to be free from defects in material and workmanship under normal use and service, for a period of twenty four (24) months from the date of installation with the exception of valve train components which are warranted for twelve (12) months from the date of installation. This warranty applies to all owners in the chain of distribution, i.e. distributor, dealer, original owner, until the end of the respective periods of coverage and shall not apply to subsequent owners.

INTERSTATE-McBEE RESPONSIBILITIES

Interstate-McBee will pay only for parts, labor and fluids needed to repair damages directly resulting from an above defined warranty failure to the functional condition existing immediately prior to the failure, including progressive damage to the engine in which the warrantable part was installed, provided Interstate-McBee's inspection of said failed part or parts discloses to our satisfaction to have been defective. Labor cost will be paid but not to exceed published flat rates times at Interstate-McBee's standard hourly rate. No overtime or holiday rates will be allowed. Only new or rebuilt Interstate-McBee or Interstate-McBee approved parts will be used in making the repair.

OWNER'S RESPONSIBILITIES

Owner is responsible for the operation and maintenance of the engine as specified in the APPLICABLE O.E.M. OPERATION AND MAINTENANCE MANUALS. Owner must give notice within (30) days of any suspected failure and before expiration of applicable warranty to be considered warrantable. Owner will provide alleged defective and associated parts for examination by Interstate-McBee and, if requested, return same F.O.B. Cleveland, Ohio. Additionally, a complete Electronic Control Module report must accompany the claim. Interstate-McBee further reserves the right to examine any engine subject to a claim under this warranty. Approved warranty work is to be performed by an authorized Interstate-McBee Distributor or Dealer or other Interstate-McBee approved facility. Copies of all work orders and invoices for repairs to the engine must accompany the claim. Owner is responsible for all costs, including, but not limited to, repairs made to items other than the engine in which the parts are installed, "downtime" expenses and all business costs and losses resulting from a warrantable failure. ALL CLAIMS MUST BE FILED ONLINE AT WWW.INTERSTATE-McBEE.COM

WARRANTY LIMITATIONS

Interstate-McBee is not responsible for failure resulting from owner or operator abuse or neglect, such as, but not limited to: operation without adequate coolant, fuel or lubricants; overfueling; overspeeding; lack of maintenance of lubricating, coolant or air intake systems; improper storage, starting, warm-up, run-in or shut down practices. Interstate-McBee is not responsible for failures resulting from improper repair or installation, for parts that have been altered or for parts not approved by Interstate-McBee. This warranty does not apply to parts furnished on a no charge basis. Interstate-McBee does not warrant parts supplied by Interstate-McBee which bear the name and trademark of another company. These parts are warranted by their manufacturers and not Interstate-McBee. In no event shall this warranty extend beyond (36) months from the date of sale. THERE ARE NO WARRANTIES EXPRESSED, IMPLIED OR STATUTORY, FOR THE PARTS NAMED HEREIN BEFORE, MADE BY INTERSTATE-McBEE OTHER THAN SET FORTH HEREIN. We neither assume nor authorize any other persons to assume for us any other liability in connection with our products. INTERSTATE-McBEE SHALL NOT BE RESPONSIBLE FOR ANY OTHER CONSEQUENTIAL DAMAGES OR CONTINGENT LIABILITIES. Further, in no event shall Interstate-McBee bear any responsibility for any damages, which exceed the then available aggregate coverage provided under the terms and conditions of its product

This warranty shall be interpreted, governed and enforced in accordance with the laws of the State of Ohio, U.S.A. (For products not covered herein, see Interstate-McBee's General Product Warranty.) Any actions or proceedings relating to this warranty must be filed or commenced within three (3) months of the alleged breach. If any of these warranty provisions or portions thereof prohibited by law or by any court of competent jurisdiction, in any locality, its invalidity or unenforceability shall not affect the validity or enforceability of any other warranty provisions or portions thereof.

INTERSTATE-McBEE L.L.C, 4901 LAKESIDE AVENUE, CLEVELAND, OHIO 44114-3996

U.S.A. Presidential Award



For Excellence in Export



INTERSTATE-McBEE
www.interstate-mcbee.com



OHIO

5300 Lakeside Avenue
Cleveland, OH 44114 U.S.A.
Tel: 216-881-0015
FAX: 216-881-0805
E-mail: sales@interstate-mcbee.com

CALIFORNIA

13137 Arctic Circle
Santa Fe Springs, CA 90670 U.S.A.
Tel: 562-356-5414
FAX: 562-926-2452

FLORIDA

9955 NW 58th Street
Doral, FL 33178 U.S.A.
Tel: 305-863-6650
FAX: 305-863-6272

TEXAS

1755 Trancentral Court, Suite 200
Houston, TX 77032 U.S.A.
Tel: 281-645-7168
FAX: 281-443-0202

Serving the diesel industry since 1947 with quality fuel injection and engine parts.