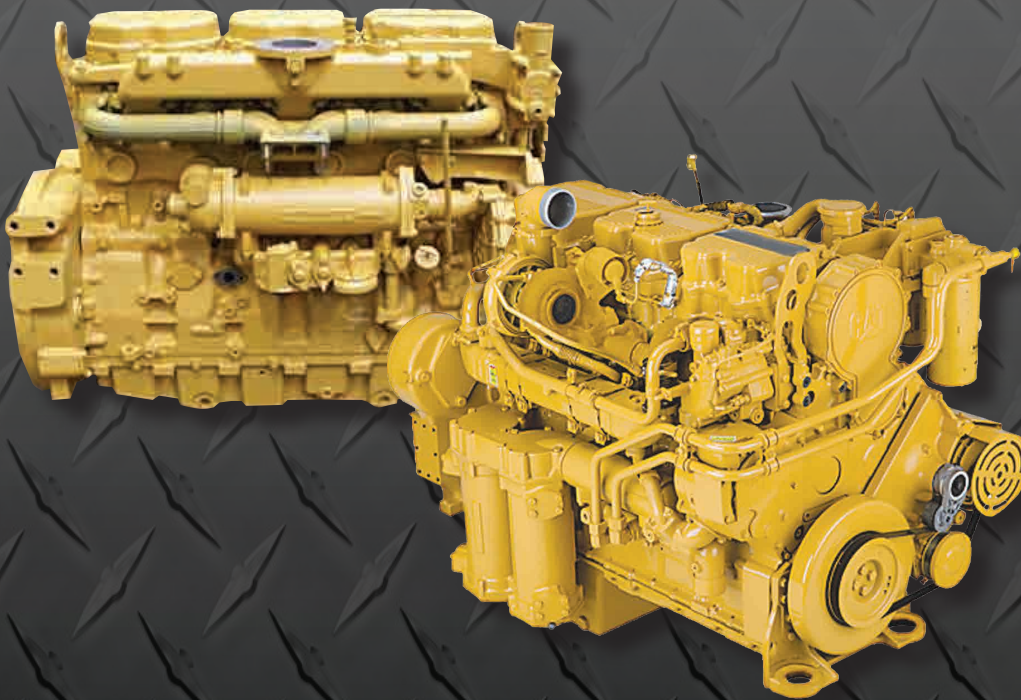




INTERSTATE-McBEE



**Replacement Parts for
CATERPILLAR®
C12-C13-3406-3406E-C15
Highway Truck Engines**



July 2019

INTERSTATE-McBEE, LLC
5300 Lakeside Avenue • Cleveland, Ohio 44114 USA
216-881-0015 • Toll Free: 1-800-321-4234 • Fax: 216-881-0805
www.interstate-mcbee.com • E-mail: sales@interstate-mcbee.com

All manufacturer's names, symbols and descriptions are for reference only
and it is not implied that any item listed is a product of said manufacturer
© Caterpillar is a registered trademarks of Caterpillar, Inc.



INTERSTATE-McBEE



INTERSTATE-McBEE, LLC

5300 Lakeside Avenue • Cleveland, Ohio 44114-3996 U.S.A.
216-881-0015 • Toll Free: 1-800-321-4234 • Fax: 216-881-0805
www.interstate-mcbee.com • E-mail: sales@interstate-mcbee.com



CONTENTS

C12/C13 Engine Kit Listing	4
C12/C13 Parts Listing	
Air Inlet & Exhaust System.....	8
Cooling System.....	10
Crankshaft Seals & Damper.....	6
Cylinder Components.....	5
Cylinder Head Components.....	7-8
Engine Bearings.....	6
Fuel System.....	9
Gasket Sets - McBee Custom.....	11
Gasket Sets - Modular.....	12-13
Lubrication System.....	10
Sensors.....	11
3406-C15 Serial Number Listing	14-16
3406-C15 Engine Kit Listing	17
3406 A/B/C Parts Listing	
Camshaft & Lifters.....	20
Cooling System.....	23
Crankshaft Seals & Damper.....	19
Cylinder Components.....	18
Cylinder Head Components.....	20
Engine Bearings.....	19
Engine Kits.....	17
Exhaust System.....	24
Fuel Injection Lines.....	22
Fuel System.....	21
Gasket Sets - McBee Custom.....	24
Gasket Sets - Modular.....	25
Lubrication System.....	22
3406E-C15 Parts Listing	
Cooling System.....	30-31
Crankshaft Seals & Damper.....	27
Cylinder Components.....	26
Cylinder Head Components.....	28-29
Cylinder Head Hardware.....	28
Engine Bearings.....	27
Exhaust & Turbocharger.....	31
Fuel System.....	29
Gasket Sets - McBee Custom.....	32
Gasket Sets - Modular.....	33
Lubrication System.....	30
Sensors.....	32

C12/C13 ENGINE KIT LISTING

TRUCK ENGINE KITS

ESN	Appl	Cylinder Kit	Inframe Kit	Overhaul Kit	IF Gkt Set	OH Gkt Set
1YN1-Up	Truck / C12	CK1979328P	MCIF1979328	MCOH1979328	MCBC10012	MCBC12011
2KS1-388	Truck / C12	CK1442948P	MCIF1442948	MCOH1442948	MCBC10012	MCBC12011
2KS389-Up	Truck / C12	CK1442948P	MCIF1442948	MCOH1442948	MCBC10022	MCBC12021
8YF1-Up	Truck / C12	CK1442948P	MCIF1442948	MCOH1442948	MCBC10022	MCBC12021
9NS1-16227	Truck / C12	CK1442948P	MCIF1442948	MCOH1442948	MCBC10012	MCBC12011
9NS16228-Up	Truck / C12	CK1442948P	MCIF1442948	MCOH1442948	MCBC10022	MCBC12021
9SM1-Up	Truck / C12	CK1442948P	MCIF1442948	MCOH1442948	MCBC10022	MCBC12021
CPD1-Up	Truck / C12	CK1442948P	MCIF1442948	MCOH1442948	MCBC10022	MCBC12021
GEP1-Up	Truck / C12	CK1442948P	MCIF1442948	MCOH1442948	MCBC10022	MCBC12021
MBL1-122	Truck / C12	**	**	**	MCBC10022	MCBC12021
MBL123-Up	Truck / C12	CK1979374P	MCIF1979374	MCOH1979374	MCBC10022	MCBC12021
TME1-Up	Truck / C12	CK1442948P	MCIF1442948	MCOH1442948	MCBC10022	MCBC12021
KCB & JAM	Truck / C13	CK3882310P	MCIF3882310	MCOH3882310	MCBC13022	MCBC13021
LEE	Truck / C13	CK3882310P	MCIF3882310-1	MCOH3882310-1	MCBC13032	MCBC13031
ESN	Appl	Cylinder Kit	Inframe Re-Ring	Overhaul Re-Ring	IF Gkt Set	OH Gkt Set
KCB & JAM	Truck / C13	n/a	MCIFC13E	MCOHC13E	MCBC13022	MCBC13021
LEE	Truck / C13	n/a	MCIFC13E	MCOHC13E	MCBC13032	MCBC13031

** In Development



C12/C13 PARTS LISTING

C12/C13 POWER CYLINDER COMPONENTS

Part #	Qty		Description	Comment
	C12	C13		
CK1442948P	6		Cylinder Kit	
CK1979328P	6		Cylinder Kit	
CK1979374P	6		Cylinder Kit	
CK3882310P		6	Cylinder Kit	Use in engine sets only
M-1442948	6		Piston Crown	
M-1979328	6		Piston Crown	
M-1979374	6		Piston Crown	
M-3882310		6	Piston Body	Use in engine sets only
M-2382712	6		Piston Skirt	
M-RSC12E	6		Piston Ring Set	
M-RSC13E		6	Piston Ring Set	
M-1979251	6		Piston Pin Assembly	With end plugs
M-1979327		6	Piston Pin	
M-1979326		12	Piston Pin Retainer	
M-1979330	6	6	Cylinder Liner	
M-1043560	6	6	Cylinder Liner Seal Ring	



C12/C13 PARTS LISTING

ENGINE BEARINGS

Part #	Qty		Description	Comment
	C12	C13		
M-1161089	6	6	Connecting Rod Bearing - STD	
M-1280395	6	6	Connecting Rod Bearing - .51mm OS	
M-1280396	6	6	Connecting Rod Bearing - .76mm OS	
M-2110587	4	4	Main Bearing - STD	
M-2110588	3	3	Main Bearing - STD	
M-1280400	4	4	Main Bearing - .51mm OS	
M-1280382	3	3	Main Bearing - .51mm OS	
M-1280401	4	4	Main Bearing - .76mm OS	
M-1280383	3	3	Main Bearing - .76mm OS	
M-2463144	2	2	Thrust Plate	
M-2165584	1		Camshaft Bushing	Front
M-2165583	5		Camshaft Bushing	Intermediate
M-2165585	1		Camshaft Bushing	Rear
M-1878969		7	Camshaft Bushing	
MCBC13CB		1	Camshaft Bushing Kit	
M-1878969		7	Camshaft Bushing	
M-1152972	6	6	Connecting Rod Bushing	
M-9M2418	1	1	Rear Idler Bushing	



C12/C13 PARTS LISTING

C12 CYLINDER HEAD COMPONENTS

Part #	Quantity	Description	Comment
N-7E9578	12	Valve - Intake	
M-1929213	12	Valve - Intake	
M-1799454	12	Valve Seat - Intake	
M-1337029	12	Valve - Exhaust	
M-1799453	12	Valve Seat - Exhaust	
M-2A4429	48	Valve Lock	
M-1008150	24	Valve Guide	
M-2244441	24	Valve Spring - Inner	
M-3322152	24	Valve Spring - Outer	
M-7E7977	24	Rotocoil	
M-1161102	6	Injector Tube	
M-1750454	26	Cylinder Head Bolt	M16 X 2 X 160MM
M-2S5658	26	Washer	
M-6V9607	7	Cylinder Head Bolt	M8 X 1.25 X 120MM

C13 CYLINDER HEAD COMPONENTS - KCB & JAM esn's

Part #	Quantity	Description	Comment
M-2243028	12	Valve - Intake	
M-2604855	12	Valve Seat - Intake	
M-2243030	12	Valve - Exhaust	
M-2241270	12	Valve Seat - Exhaust	
M-2A4429	48	Valve Lock	
M-2682953	24	Valve Guide	
M-2244441	24	Valve Spring - Inner	
M-3322152	24	Valve Spring - Outer	
M-7E7977	24	Rotocoil	
M-2634920	6	Injector Tube	KCB14119 & up
M-2274239ORK	6	Injector Tube Seal Kit	KCB14119 & up
M-1750454	26	Cylinder Head Bolt	M16 X 2 X 160MM
M-2S5658	26	Washer	
M-6V9607	7	Cylinder Head Bolt	M8 X 1.25 X 120MM

C12/C13 PARTS LISTING

C13 CYLINDER HEAD COMPONENTS - LEE esn's

Part #	Quantity	Description	Comment
M-2527802	12	Valve - Intake	
M-2604855	12	Valve Seat - Intake	
M-2481467	12	Valve - Exhaust	
M-2241270	12	Valve Seat - Exhaust	
M-2A4429	48	Valve Lock	
M-2682953	24	Valve Guide	
M-2244441	24	Valve Spring - Inner	
M-3322152	24	Valve Spring - Outer	
M-6I2663	24	Rotocoil	
M-2634920	6	Injector Tube	
M-2274239ORK	6	Injector Tube Seal Kit	
MCBC13HBK	1	Head Bolt Kit	
M-2421811	26	Cylinder Head Bolt	
M-2S5658	26	Washer	
M-2104460	8	Cylinder Head Bolt	

AIR INLET & EXHAUST SYSTEM

Part #	Quantity		Description	Comment
	C12	C13		
MCBC12ESK	1	1	Exhaust Manifold Stud Kit	General Usage
M-1163715	12	12	Stud Taperlock	
M-4P4369	12	12	Spacer	
M-3E8017	12	12	Nut	
M-9X8281	4		Turbo Mounting Stud	
M-2459750		4	Turbo Mounting Stud	
M-3E8017	4		Turbo Mounting Nut	
M-9X6620		4	Turbo Mounting Nut	

C12/C13 PARTS LISTING

FUEL SYSTEM

Part #	Quantity		Description	Comment
	C12	C13		
R-10R0725	6		Injector - Rebuilt	Ref# 2123464 (NEW)
R-10R0961	6		Injector - Rebuilt	Ref# 2123465 (NEW)
R-10R0966	6		Injector - Rebuilt	Ref# 2123461 (NEW)
R-10R0968	6		Injector - Rebuilt	Ref# 2123466 (NEW)
R-10R2977		6	Injector - Rebuilt	Ref# 2490708 (NEW)
M-2245797	6		Injector O-Ring Kit	External Seals
M-2153198			1-Injector Seal Ring	Upper
M-1198784			1-Injector Seal Ring	Intermediate
M-9X7317			1-Injector Seal Ring	Lower
M-2481394		6	Injector O-Ring Kit	External Seals
M-2303775			1-Injector Seal Ring	Upper
M-2303728			1-Injector Seal Ring	Intermediate
M-9X7317			1-Injector Seal Ring	Lower
M-1375541	1	1	Fuel Priming Pump	
M-1P0436	1	1	Fuel Priming Pump Gasket	



C12/C13 PARTS LISTING

LUBRICATION SYSTEM

Part #	Quantity		Description	Comment
	C12	C13		
M-2335220	1		Oil Pump	
M-2231608		1	Oil Pump	
M-6D7146	1	1	Seal Ring - Body to Cover	
MCBC12016	1	1	Oil Pump Insallation Kit	
M-6N2985	1		Oil Filler Cap	1 7/8" Valve Cover
M-5L2952	1		Oil Filler Cap	1 1/2" side fill
M-1154517	1		Oil Cooler Core	
M-2368745		1	Oil Cooler Core	KCB & JAM esn's
M-2775774		1	Oil Cooler Core	LEE esn's
M-1095308	1	1	Oil Pan Seal	
M-7C8296	14	14	Oil Pan Isolator	
M-2133673		1	Oil Pan Seal	
M-2133674		14	Oil Pan Isolator	

COOLING SYSTEM

Part #	Quantity		Description	Comment
	C12	C13		
M-2477133	AR	AR	Regulator - 190°	Single & Double types used
M-3S9643	AR	AR	Regulator Seal	
M-7E7912	1		Regulator Housing Gasket	Single Regulator
M-2275075		1	Regulator Housing Gasket	Single Regulator
M-1314164	1		Regulator Housing Gasket	Double Regulator
M-2246361		1	Regulator Housing Gasket	Double Regulator
M-7L6580		2	By Pass Tube Seal	Double Regulator
M-1767000	1		Water Pump	
M-3520206		1	Water Pump	
M-6V7350	1	1	Water Pump Mounting Seal	

C12/C13 PARTS LISTING

SENSORS

Part #	Quantity		Description	Comment
	C12	C13		
M-1946722	AR	AR	Sensor - Pressure*	
M-1946724	AR	AR	Sensor - Pressure*	
M-1946725	AR	AR	Sensor - Pressure*	
M-2644297	AR	AR	Sensor - Temperature*	

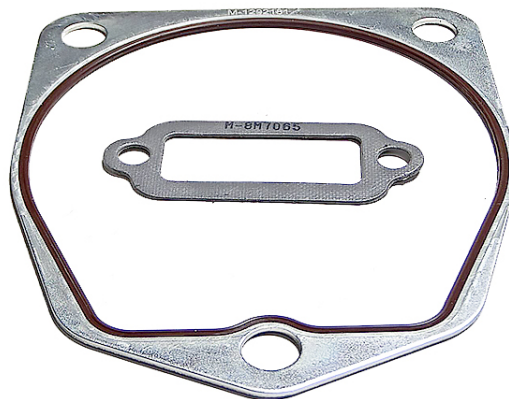
GASKET SETS - MCBEE CUSTOM

Part #	Quantity		Description	Comment
	C12	C13		
MCBC12011	1		Overhaul Gasket Set	1YN, 2KS1-388 & 9NS1-16227 "Scalloped" Head Gasket
MCBC10012	1		In-Chassis Gasket Set	
MCBC10013	1		Cylinder Head Gasket Set	
MCBC12021	1		Overhaul Gasket Set	2KS389 & up 9NS16228 & up 9SM, CPD, MBL & TME
MCBC12022	1		In-Chassis Gasket Set	
MCBC12023	1		Cylinder Head Gasket Set	
MCBC12121	1		Overhaul Gasket Set	Generator, Industrial & Machine
MCBC12122	1		In-Chassis Gasket Set	
MCBC12123	1		Cylinder Head Gasket Set	
MCBC13021		1	Overhaul Gasket Set	KCB JAM
MCBC13022		1	In-Chassis Gasket Set	
MCBC13013		1	Cylinder Head Gasket Set	
MCBC13031		1	Overhaul Gasket Set	LEE
MCBC13032		1	In-Chassis Gasket Set	
MCBC13033		1	Cylinder Head Gasket Set	

C12/C13 PARTS LISTING

GASKET SETS - MODULAR

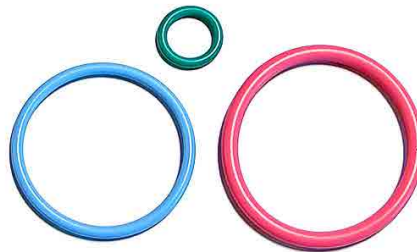
Part #	Quantity		Description	Comment
	C12	C13		
M-1390616	1		Air Compressor Set	1YN, 2KS & 9NS
M-4173776	1		Central & Lower Set	
M-4174536	1		Front Structure Set	
M-2245797	6		Fuel Injector Set	
M-2245876	1		Fuel System Set	
M-1349807	1		Oil Cooler Set	
M-7X7975	1		Oil Pump Set - External	
M-2266620	1		Rear Structure Set	
M-3949183	1		Turbocharger Installation Set	
M-1473781	1		Water Pump Installation Set	
M-1933318	1		Air Compressor Set	MBL, CPD, GEP & TME
M-2434780	1		Central & Lower Set	
M-4178843	1		Front Structure Set	
M-2245797	6		Fuel Injector Set	
M-2501273	1		Fuel System Set	
M-2434690	1		Oil Cooler Set	
M-7X7975	1		Oil Pump Set - External	
M-2266620	1		Rear Structure Set	
M-3949183	1		Turbocharger Installation Set	
M-3156714	1		Water Pump Installation Set	



C12/C13 PARTS LISTING

GASKET SETS - MODULAR (cont.)

Part #	Quantity		Description	Comment
	C12	C13		
M-3149899		1	Air Compressor Set	KCB, JAM
M-3136846		1	Central & Lower Set	
M-3136898		1	Front Structure Set	
M-2481394		6	Fuel Injector Set	
M-3136847		1	Fuel System Set	
M-2655324		1	Oil Cooler Set	
M-2655326		1	Oil Pump Set - External	
M-2266620		1	Rear Structure Set	
M-4367102		1	Turbocharger Installation Set	
M-3142771		1	Water Pump Installation Set	
M-3149899		1	Air Compressor Set	LEE
M-4394077		1	Central & Lower Set	
M-4388606		1	Front Structure Set	
M-2481394		6	Fuel Injector Set	
M-3136847		1	Fuel System Set	
M-4394451		1	Oil Cooler Set	
M-2655326		1	Oil Pump Set - External	
M-3348404		1	Rear Structure Set	
M-4390524		1	Turbocharger Installation Set	
M-3348407		1	Water Pump Installation Set	



SERIAL NUMBER LISTING

3406-C15

3406

ESN	Appl	Piston	Crown	Model/ESN	Note	Line	Page
92U	TRUCK	M-6N4080		3406/92U2954-Up	D.I.	16	13
		M-6N4126			P.C.	17	
		M-7N3509			D.I.	16	
		M-7N3633			P.C.	17	
		M-3780509				16	

3406B

ESN	Appl	Piston	Crown	Model/ESN	Note	Line	Page
2EK	TRUCK	M-1601131		3406B/2EK1-1930		16	13
		M-7E8656					
		M-7E8700					
3ZJ	TRUCK	M-7E539		3406B/3ZJ1-589		16	13
		M-7E8656		3406B/3ZJ1-16181			
		M-7E8700					
4CK	TRUCK	M-1601131		3406B/4CK1-845		16	13
		M-7E8656					
		M-7E8700					
4MG	TRUCK	M-7C473		3406B/4MG1-3599	Use M-3780509 Full Sets	16	13
		M-7C3496			Use M-9Y3116 Full Sets		
		M-3780509					
4MG	TRUCK	M-7C3406		3406B/4MG3600-Up	Use M-9Y9889 Full Sets	16	13
		M-7C3496			Use M-9Y3116 Full Sets		
		M-7E539					
		M-7E8885			Use M-9Y7212 Full Sets		
		M-9Y7212					
		M-9Y9889					
		M-3780509					

We are adding new products regularly.....
Join our website and become a member for updates.

www.Interstate-McBee.com

SERIAL NUMBER LISTING

3406-C15

3406B

ESN	Appl	Piston	Crown	Model/ESN	Note	Line	Page
5KJ	TRUCK	M-7C3406		3406B/5KJ1-7538	Use M-9Y9889 Full Sets	16	13
		M-7E539		3406B/5KJ1-7599			
		M-7E8885		3406B/5KJ1-7538	Use M-9Y7212 Full Sets		
		M-9Y9889		3406B/5KJ1-7599			
		M-3780509		3406B			
7FB	TRUCK	M-7C473		3406B	Use M-3780509 Full Sets	16	13
		M-7C3496			Use M-9Y3116 Full Sets		
		M-7W3668			Use M-9Y3116 Full Sets		
		M-3780509					
8TC	TRUCK	M-7C3406		3406B/8TC1413-Up	Use M-9Y9889 Full Sets	16	13
		M-7C3496		3406B/8TC1-1412	Use M-9Y3116 Full Sets		
		M-7E539		3406B/8TC1413-Up			
		M-9Y7212					
		M-9Y9889					
		M-3780509					

3406C

ESN	Appl	Piston	Crown	Model/ESN	Note	Line	Page
3ZJ	TRUCK	M-7E292		3406C/3ZJ16182-60112		15	13
		M-7E539		3406C/3ZJ60113-Up		16	
		M-7E8656		3406C/3ZJ16182-60112			
		M-7E8700					
		M-1007403				100	
		M-1010016		3406C/3ZJ16182-Up		15	
4CK	TRUCK	M-7E292		3406C/4CK846-Up		15	13
		M-7E8656					
		M-7E8700					
		M-1601131			16		
5KJ	TRUCK	M-7E539		3406C/5KJ7800-Up		16	13
		M-9Y9889					
		M-1601131					
		M-2900017					
8PN	TRUCK	M-1175063		3406C		15	13
						100	

SERIAL NUMBER LISTING

3406-C15

3406E

ESN	Appl	Piston	Crown	ESN	Note	Line	Page
1LW	TRUCK		M-1807352			1	13
2WS	TRUCK		M-1807352			1	13
5DS	TRUCK		M-1398500			100	13
5EK	TRUCK	M-1082716				3	13
			M-7C2888			4	
			M-1352837			5	
			M-1365201			11	
6TS	TRUCK		M-1352837			5	13
			M-1365201			12	
			M-149556			6	

C15

ESN	Appl	Piston	Crown	ESN	Note	Line	Page
6NZ	TRUCK		M-1807351			13	13
			M-1807352			2	
9NZ	TRUCK		M-1807352			2	13
B5R	TRUCK	MCB3569946		B5R1-352		7	13
		M-3307762		B5R351-Up		100	
BXS	TRUCK	MCB3067460				8	13
EGH	TRUCK		M-2212305			9	13
JEP	TRUCK	MCB3569946		JEP1-228		7	13
		M-3307762		JEP229-Up		14	
KRA	TRUCK	MCB3067460		KRA1-4714		8	13
		M-3259492		KRA4715-Up		14	
MBN	TRUCK		M-2250115			10	13
MXS	TRUCK	MCB3067460				8	13
		MCB3569946			High HP 600 & Up	7	
NXS	TRUCK	MCB3067460				8	13
		MCB3569946			High HP 600 & Up	7	
		M-3259492				14	
RKS	TRUCK	MCB3067460				8	13
SDP	TRUCK	MCB3067460				8	13
		MCB3569946			High HP 600 & Up	18	
		M-3259492				14	
		M-3307762				100	
TRB	TRUCK	M-3307762				14	13

ENGINE KIT LISTING

3406-C15



ENGINE KITS

Line	Inframe Kit	Overhaul Kit	Cylinder Kit	Ref#	Inframe Set	Overhaul Set
1	MCIF1807352	MCOH1807352	M-CK1807352P	0R8915	MCB3406472	MCB3406471
2	MCIF1807352-C15	MCOH1807352-C15	M-CK1807352P	0R8915	MCBC15112	MCBC15111
3	MCIF1082716	MCOH1082716	M-CK1082716P	N/A	MCB3406462	MCB3406461
4	MCIF7C2888	MCOH7C2888	M-CK7C2888P	0R8333	MCB3406462	MCB3406461
5	MCIF1352837	MCOH1352837	M-CK1352837P	10R9554	MCB3406472	MCB3406471
6	MCIF1495566	MCOH1495566	M-CK1495566P	0R8913	MCB3406472	MCB3406471
7	MCIF3569946	MCOH3569946	M-CK3569946P	20R0430	MCBC15212	MCBC15211
8	MCIF3067460	MCOH3067460	M-CK3067460P	10R9923	MCBC15212	MCBC15211
9	MCIF2212305	MCOH2212305	M-CK2212305P	N/A	MCBC15092	MCBC15091
10	MCIF2250115-C15	MCOH2250115-C15	M-CK2250115P	10R9345	MCBC15112	MCBC15111
11	MCIF3406E	MCOH3406E	N/A	N/A	use ESN	use ESN
12	MCIF3406E-S	MCOH3406E-S	N/A	N/A	use ESN	use ESN
13	MCIFC15E-S	MCOHC15E-S	N/A	N/A	MCBC15092	MCBC15091
14	MCIFC15E1	MCOHC15E1	N/A	N/A	MCBC15212	MCBC15211
15	MCIF3406BP	MCOH3406BP	use ESN	use ESN	use ESN	use ESN
16	MCIF3406SP	MCOH3406SP	use ESN	use ESN	use ESN	use ESN
17	MCIF3406PC	MCOH3406PC	use ESN	use ESN	use ESN	use ESN
18	MCIF3569946SDP	MCOH3569946SDP	M-CK3569946P	N/A	MCBC15322	MCBC15321
100	Components Available (except Pistons, Crowns and Skirts)					

3406 A/B/C PARTS LISTING

CYLINDER COMPONENTS

Part #	Quantity	Description	Comment
M-6N4080	6	Piston Body	D.I.
M-6N4126	6	Piston Body	P.C.
M-7E292	6	Piston Body	Ref# 0R3757
M-7E539	6	Piston Body	Ref# 0R2975
M-7E8656	6	Piston Body	Ref# 0R3783
M-7E8700	6	Piston Body	Ref# 0R3782
M-7N3509	6	Piston Body	Ref# 0R2693
M-7N3633	6	Piston Body	Ref# 0R1570 - P.C.
M-9Y7212	6	Piston Body	Ref# 0R2862
M-9Y9889	6	Piston Body	Ref# 0R2861
M-1010016	6	Piston Body	Ref# 0R4281
M-1175063	6	Piston Body	
M-1601131	6	Piston Body	Ref# 0R4178
M-3780509	6	Piston Body	Ref# 20R1115, 20R1116
M-8N822	6	Piston Ring Set	
M-1W8922	6	Piston Ring Set	
M-7N9806	6	Piston Pin	
M-7N9807	6	Piston Pin	
M-8N1608	6	Piston Pin	
M-1687246	6	Piston Pin	
M-3F8513	12	Piston Pin Retainer	
M-7E1177	12	Piston Pin Retainer	
M-7E5665	12	Piston Pin Retainer	
M-1979322	6	Cylinder Liner	
M-1609874	6	Gasket Set - Cylinder Liner Packing	
M-9Y3368	AR	Cylinder Liner Insert - Stainless	.0324"
M-2W3815	AR	Cylinder Liner Insert - Stainless	.0632"
M-7W4990	6	Jet Assembly - Piston Cooling	

3406 A/B/C PARTS LISTING

ENGINE BEARINGS

Part #	Quantity	Description	Comment
M-3285574G	6	Connecting Rod Bearing - STD	Grooved Narrow Journal
M-9Y9497.010	6	Connecting Rod Bearing - .010"	Narrow Journal
M-4W5702	6	Connecting Rod Bearing - .025"	Narrow Journal
M-4W5703	6	Connecting Rod Bearing - .050"	Narrow Journal
M-9Y7735G	6	Connecting Rod Bearing - STD	Grooved Wide Journal
M-9Y7735.010	6	Connecting Rod Bearing - .010"	Wide Journal
M-7E0558	6	Connecting Rod Bearing - .025"	Wide Journal
M-7E0559	6	Connecting Rod Bearing - .050"	Wide Journal
M-3178766	7	Main Bearing - STD	
M-4W5492.010	7	Main Bearing - .010"	
M-4W5698	7	Main Bearing - .025"	
M-4W5699	7	Main Bearing - .050"	
M-2531752	2	Thrust Washers	
M-8N705	6	Connecting Rod Bushing	Straight Rod
M-8N706	6	Connecting Rod Bushing	Narrow Taper
M-8N2018	6	Connecting Rod Bushing	Wide Taper
M-4P8495	6	Connecting Rod Bushing	Side Relief
M-6I2726	6	Connecting Rod Bushing	Big Pin
M-4N685	6	Camshaft Bushing	
M-4N6658	1	Camshaft Bushing	
M-1317123	1	Idler Gear Bushing	

CRANKSHAFT SEALS & DAMPER

Part #	Quantity	Description	Comment
M-7C4859	1	Crankshaft	w/o Gear
M-6I1453	1	Crankshaft - Wide Bearing	w/o Gear
M-1425867	1	Front Crankshaft Seal	
M-1425868	1	Rear Crankshaft Seal	
M-1678126	1	Vibration Damper	
M-1682100	a/r	Vibration Damper Spacer	

3406 A/B/C PARTS LISTING

CYLINDER HEAD COMPONENTS

Part #	Quantity	Description	Comment
M-1152368	12	Valve - Intake	
M-1152367	12	Valve - Exhaust	
M-2A4429	48	Valve Lock	
M-4N5893	12	Valve Seat - Intake	
M-1W5283	12	Valve Seat - Exhaust	
M-1737188	24	Valve Guide	
M-1227374	24	Valve Guide	Machined for Stem Seal
M-1632478	24	Valve Stem Seal	
M-6N7175	24	Rotocoil - Single Spring	Includes M-6N7174 Shield
M-6N7174	24	Rotocoil Shield	
M-4W2474	24	Rotocoil - Double Spring	3406 B & C
M-4N5906	24	Valve Spring	Single Spring
M-4W2472	24	Valve Spring - Inner	Dual Spring
M-4W2471	24	Valve Spring - Outer	Dual Spring
M-4W2473	24	Valve Spring Seat	Dual Spring
M-1006920	6	Nozzle Adapter	40mm (verify w/ ESN)
M-8M5249	6	Nozzle Adapter Seal Ring	40mm (verify w/ ESN)
M-7W5435	6	Nozzle Adapter	40mm (verify w/ ESN)
M-5H7153	6	Nozzle Adapter Seal Ring	40mm (verify w/ ESN)
M-4N7253	6	Nozzle Adapter Gasket	40mm
M-2S2251	6	Nozzle Adapter Seal Ring	55mm
M-6I2981	1	Spacer Plate	
M-2M6471	1	Cup Plug	1.5"
M-3B623	10	Cup Plug	1"
M-3B645	12	Cup Plug	1.25"
M-5P5678-6	1	Valve Cover Gasket	
M-5P5678-9	1	Valve Cover Gasket	Engine Brake equipped

CAMSHAFT & LIFTERS

Part #	Quantity	Description	Comment
M-1007408	1	Camshaft	w/o Gear ref. 0R3787
M-4223883	12	Valve Lifter Assembly	
M-4W3817	12	Lifter Repair Kit	Roller, Pin and Lock
M-3056843	12	Lifter Guide Spring	

3406 A/B/C PARTS LISTING

FUEL SYSTEM

Part #	Quantity	Description	Comment
M-9L6884	6	Fuel Nozzle - Capsule	D.I.
M-9N3246	6	Fuel Nozzle - Capsule	
M-4W7017	6	Fuel Nozzle - 7000 Series	R-0R3421 (Reman)
M-4W7018	6	Fuel Nozzle - 7000 Series	R-0R3422 (Reman)
M-4W7022	6	Fuel Nozzle - 7000 Series	R-0R3426 (Reman)
M-7W7026	6	Fuel Nozzle - 7000 Series	R-0R3423 (Reman)
M-7W7032	6	Fuel Nozzle - 7000 Series	R-0R3424 (Reman)
M-7W7037	6	Fuel Nozzle - 7000 Series	R-0R3425 (Reman)
M-7W7040	6	Fuel Nozzle - 7000 Series	R-0R3586 (Reman)
M-7W7041	6	Fuel Nozzle - 7000 Series	R-0R3587 (Reman)
M-7W7042	6	Fuel Nozzle - 7000 Series	R-0R3588 (Reman)
M-7W7043	6	Fuel Nozzle - 7000 Series	R-0R3589 (Reman)
M-7W7044	6	Fuel Nozzle - 7000 Series	R-0R3590 (Reman)
M-1007551	6	Fuel Nozzle - 7000 Series	R-0R4335 (Reman)
M-1007556	6	Fuel Nozzle - 7000 Series	R-0R4337 (Reman)
M-1007557	6	Fuel Nozzle - 7000 Series	R-0R4338 (Reman)
M-1007558	6	Fuel Nozzle - 7000 Series	R-0R4339 (Reman)
M-1279792	6	Fuel Nozzle - 7000 Series	R-0R8289 (Reman)
M-1279793	6	Fuel Nozzle - 7000 Series	R-0R8290 (Reman)
M-1311243	6	Fuel Nozzle - 7000 Series	R-0R8243 (Reman)
MCBKT7000	AR	Nozzle Seal Kit - 7000 Series	
MCB3406A	1	Injection Pump Overhaul Kit	Gaskets & Seals 3406A
MCB3406B	1	Injection Pump Overhaul Kit	Gaskets & Seals 3406B
MCB3406C	1	Injection Pump Overhaul Kit	Gaskets & Seals 3406C
MCB3406BPM	1	Injection Pump Mounting Kit	
M-1W1700	1	Fuel Transfer Pump	Ref# 0R3008
MCB22240	1	O/H Kit Fuel Transfer Pump	
M-1052508	1	Fuel Priming Pump	Short
M-1375541	1	Fuel Priming Pump	Tall
M-1P436	1	Fuel Priming Pump Gasket	
MCB34062	1	Fuel Ratio Repair Kit	
M-1W9168	AR	Fuel Line Clamp	
M-1W9169	AR	Fuel Line Clamp	Threaded

3406 A/B/C PARTS LISTING

FUEL INJECTION LINES

Model	Line #1	Line #2	Line #3	Line #4	Line #5	Line #6
3406	M-4N9971	M-4N9972	M-4N9973	M-4N9974	M-4N9975	M-4N9976
3406	M-9Y1081	M-9Y1082	M-9Y1083	M-9Y1084	M-9Y1085	M-9Y1086
3406B/C	M-1917941	M-1917942	M-1917943	M-1917944	M-1917945	M-1917946

LUBRICATION SYSTEM

Part #	Quantity	Description	Comment
M-7C3039	1	Cooler Core	Ref# 0R5511
M-1090077	2	Seal O-Ring	
M-4N733	1	Oil Pump	Ref# 0R9448
M-6N1931	1	Relief Plunger	
M-2S2760	1	Plunger Spring	
MCB3400RK	1	Oil Pump Rebuild Kit	For use on 4N733 Pump
M-6N2985	1	Oill Filler Cap	
M-0S1588	40	Oil Pan Bolt	
M-5M2894	40	Washer	
M-4N1151	AR	Oil Pan Gasket	Puzzle Style
M-4N1151-6	AR	Oil Pan Gasket	One Piece Style



3406 A/B/C PARTS LISTING

COOLING SYSTEM

Part #	Quantity	Description	Comment
M-1209453	1	Regulator - 170°	
M-2485513	1	Regulator - 180°	
M-2477133	1	Regulator - 190°	
M-3S9643	1	Regulator Seal	
M-4N1156	2	Gasket	
M-7C307	1	Gasket	
M-1354926	1	Water Pump	Ref. 10R482 (Reman)
M-1282922	1	Water Pump Mounting Gasket	
M-7C9222	1	Water Pump Adaptor Plate	Aluminum
M-4P2383	1	Water Pump Adaptor Plate	Cast Iron
M-1279885	1	Water Pump Rebuild Kit**	
M-1293068	1	Water Pump Rebuild Kit**	Ball Bearing
M-1293069	1	Water Pump Rebuild Kit**	Roller Bearing
M-1386744	1	Water Pump Rebuild Kit**	Roller Bearing & Unitized Seal
M-8H9789	2	Fan Hub Bearing	
M-5S2106	1	Fan Hub Seal	
M-7F2122	1	Fan Hub O-Ring Seal	

**Note: Match to pump via serial # & arrangement.



3406 A/B/C PARTS LISTING

EXHAUST SYSTEM

Part #	Quantity	Description	Comment
MCB3406SK	1	Stud Kit	3406A/B
MCB3406ESK	1	Stud Kit	3406C
MCB3406CHKT	1	Exhaust Hardware Kit	3406C
M-1948424	6	Exhaust Port Sleeve	3406C
M-6L8562	1	Exhaust Manifold Stud - 1.77"	3406A/B
M-7L520	1	Exhaust Manifold Stud - 2"	
M-8M1871	1	Exhaust Manifold Stud - 2.4"	
M-4S6137	11	Exhaust Manifold Stud - 3.1"	
M-1061793	1	Exhaust Manifold Stud - 2.36"	3406C
M-1061792	11	Exhaust Manifold Stud - 4"	
M-2S3770	11	Spacer - 1.32"	3406A
M-1083612	11	Spacer - 2"	3406B
M-2S3770	1	Spacer - 1.32"	
M-1064159	1	Spacer - .532"	3406C
M-1083612	11	Spacer - 2"	
M-2N2766	12	Locknut	
M-5M2894	12	Hard Washer	
M-2N2765	4	Turbo Mounting Bolt	High Temperature
M-2N2766	4	Turbo Mounting Locknut	

GASKET SETS - MCBEE CUSTOM

Part #	Quantity	Description	Comment
MCB3406031	1	Overhaul Gasket Set	92U5944-Up
MCB3406032	1	In-Chassis Gasket Set	
MCB3406033	1	Cylinder Head Set	
MCB3406051	1	Overhaul Gasket Set	3406B JWAC
MCB3406052	1	In-Chassis Gasket Set	
MCB3406053	1	Cylinder Head Set	
MCB3406061	1	Overhaul Gasket Set	3406B ATAAC
MCB3406062	1	In-Chassis Gasket Set	
MCB3406063	1	Cylinder Head Set	
MCB3406111	1	Overhaul Gasket Set	3406C 19-bolt Flywheel Housing
MCB3406112	1	In-Chassis Gasket Set	
MCB3406113	1	Cylinder Head Set	
MCB3406271	1	Overhaul Gasket Set	3406C round Exhaust Ports 24-bolt Flywheel Housing
MCB3406272	1	In-Chassis Gasket Set	3406C round Exhaust Ports 24-bolt Flywheel Housing
MCB3406273	1	Cylinder Head Set	

Note: Injector O-Rings included in all McBee Custom Gasket Sets.

All manufacturer's names, numbers, symbols and descriptions are used for reference only and do not imply that any part listed is the product of these manufacturers.

3406 A/B/C PARTS LISTING

GASKET SETS - MODULAR

Part #	Quantity	Description	Comment
M-1909861	1	Aftercooler & Lines Set	3406A General Usage
M-6V851	1	Air Compressor Set	
M-5P8108	1	Central & Lower Set	
M-2337083	1	Front Structure Set	
M-6V5497	1	Fuel System Set	
M-1144787	1	Oil Cooler Set	
M-2326574	1	Rear Structure Set	
M-1601113	1	Turbocharger Installation Set	
M-5P8059	1	Water Lines Set	
M-1282922	1	Water Pump Installation Set	
M-1909861	1	Aftercooler & Lines Set	3406B JWAC General Usage
M-6V9896	1	Air Compressor Set	
M-8T6678	1	Central & Lower Set	
M-2341874	1	Front Structure Set	
M-8T6692	1	Fuel System Set	
M-1153657	1	Oil Cooler Set	
M-2326574	1	Rear Structure Set	
M-6V9727	1	Turbocharger Installation Set	
M-1282922	1	Water Pump Installation Set	
M-6V9896	1	Air Compressor Set	3406B ATAAC General Usage
M-8T6678	1	Central & Lower Set	
M-2341874	1	Front Structure Set	
M-7X2754	1	Fuel System Set	
M-1153657	1	Oil Cooler Set	
M-2326574	1	Rear Structure Set	
M-8C3248	1	Turbocharger Installation Set	
M-1282922	1	Water Pump Installation Set	
M-1243005	1	Air Compressor Set	3406C General Usage
M-1269520	1	Central & Lower Set	
M-2341874	1	Front Structure Set	
M-1228900	1	Fuel System Set	
M-1415787	1	Oil Cooler Set	
M-2323679	1	Rear Structure Set	
M-1134421	1	Turbocharger Installation Set	
M-1282922	1	Water Pump Installation Set	

3406E/C15 PARTS LISTING

CYLINDER COMPONENTS

Part #	Quantity		Description	Comment
	3406E	C15		
M-1082716	6		Piston	1 pc Aluminum < 410 HP
M-3259492		6	Piston	Use MCB3067460 in full engine sets
MCB3067460		6	Piston	1pc Steel Piston
MCB3569946		6	Piston	1pc Steel Piston
M-7C2888	6		Piston Crown	
M-1352837	6		Piston Crown	
M-1365201	6		Piston Crown	
M-1495566	6		Piston Crown	
M-1807351		6	Piston Crown	
M-1807352	6	6	Piston Crown	
M-2212305	6		Piston Crown	
M-2250115		6	Piston Crown	
M-1300241	6		Piston Skirt	
M-1326663		6	Piston Skirt	
M-1W8922	6		Piston Ring Set	
M-RS3406E1	6		Piston Ring Set	
M-RS3406E2	6	6	Piston Ring Set	2pc pistons
M-RSC15E		6	Piston Ring Set	1pc steel pistons
M-RSC15E1		6	Piston Ring Set	
M-RSC15E2		6	Piston Ring Set	
RS3569946		6	Piston Ring Set	
M-1687246	6	6	Piston Pin	
M-1807350		6	Piston Pin	1pc steel pistons
M-7E1177	12	12	Piston Pin Retainer	
M-2502940		12	Piston Pin Retainer	
M-1979322	6	6	Cylinder Liner	
M-1609874	6	6	Cylinder Liner O-Ring Kit	
M-9Y3368	AR	AR	Cylinder Liner Insert - Stainless	.0324"
M-2W3815	AR	AR	Cylinder Liner Insert - Stainless	.0632"
M-9Y6054	6		Connecting Rod	Ref# 0R3780
M-2243245		6	Connecting Rod	Ref# 10R2117 (4 Bolt)

3406E/C15 PARTS LISTING

ENGINE BEARINGS

Part #	Quantity		Description	Comment
	3406E	C15		
M-9Y7735G	6	6	Connecting Rod Bearing STD	Grooved Wide Journal
M-2243246		6	Connecting Rod Bearing STD	1pc steel pistons
M-9Y7735.010	6	6	Connecting Rod Bearing .010"	
M-7E558	6	6	Connecting Rod Bearing .025"	
M-2323235		6	Connecting Rod Bearing .025"	1pc steel pistons
M-7E559	6	6	Connecting Rod Bearing .050"	
M-2323236		6	Connecting Rod Bearing .050"	1pc steel pistons
M-3178766	7	7	Main Bearing STD	
M-4W5492.010	7	7	Main Bearing .010"	
M-4W5698	7	7	Main Bearing .025"	
M-4W5699	7	7	Main Bearing .050"	
M-2531752	2	2	Thrust Washer	
M-2436718	1	1	Main Bearing Kit	Shells & Thrust Plates
M-6I2726	6		Connecting Rod Bushing	
M-2296259		6	Connecting Rod Bushing	1pc steel pistons
M-2165582	7	7	Camshaft Bearing STD	
M-1504793	7	7	Camshaft Bearing .010"	
M-2170752	7	7	Camshaft Bearing .030"	
M-2613430	7	7	Camshaft Bearing .050"	
M-2613429	7	7	Camshaft Bearing .070"	
M-1317123	1	1	Idler Gear Bushing	

CRANKSHAFT SEALS & DAMPER

Part #	Qty		Description	Comment
	3406E	C15		
M-6I1453	1		Crankshaft	w/o Gear
M-1601799		1	Crankshaft	w/o Gear
M-3370201		1	Crankshaft	4-bolt connecting rod w/o Gear
M-1425867	1	1	Front Crankshaft Seal	
M-1425868	1	1	Rear Crankshaft Seal	
M-1678126	1	1	Vibration Damper	13.5" O.D.
M-1682100	a/r	a/r	Vibration Damper Spacer	

3406E/C15 PARTS LISTING

CYLINDER HEAD COMPONENTS

Part #	Quantity		Description	Comment
	3406E	C15		
M-1537023	12	12	Valve - Intake	
M-1753617	12	12	Valve Seat - Intake	
M-2243983		12	Valve Seat - Intake	
M-1537024	12	12	Valve - Exhaust	
M-1527582	12	12	Valve Seat - Exhaust	
M-2265561		12	Valve Seat - Exhaust	
M-2A4429	48	48	Valve Lock	
M-3487743	12	12	Valve Bridge	
M-1227375	24	24	Valve Guide	
M-1632478	24	24	Valve Stem Seal	
M-2113122	24	24	Valve Spring - Inner	
M-2479908	24	24	Valve Spring - Outer	
M-6I0928	24	24	Washer - Spring Seat	
M-1862001	24	24	Rotocoil	
M-2274239	6	6	Injector Sleeve	
M-3453399	6		Injector Sleeve - Oversize	
M-2287094	6		Nose O-ring	For oversize sleeve
M-2634920		6	Injector Sleeve	Acert
M-2274239ORK	6	6	Injector Sleeve O-Ring Kit	
M-3044925		1	Rocker Cover Isolator Seal	ESN = SDP, B5R

CYLINDER HEAD HARDWARE

Part #	Quantity		Description	Comment
	3406E	C15		
MCBC15HBK	1	1	Cylinder Head Bolt Kit	Bolts & Washers
M-1241854	10	10	Cylinder Head Bolt	215.9mm (8.5")
M-1241855	16	16	Cylinder Head Bolt	194mm (7.6")
M-5H1504	26	26	Cylinder Head Bolt Washer	Hard
M-3078322	3	3	Rocker Shaft Assembly	
M-1670867	12	12	Engine Brake Mounting Bolt	5.75"
M-2349508		3	Engine Brake Actuator Bolt	
MCB7121	6	6	Injector Rocker Arm Bushing	
MCB7122	12	12	Valve Rocker Arm Bushing	
M-2038822PR	12	12	Pin and Roller Kit - Valve	
M-2075248PR	6	6	Pin and Roller Kit - Injector	

3406E/C15 PARTS LISTING

CYLINDER HEAD HARDWARE (cont.)

Part #	Quantity		Description	Comment
	3406E	C15		
M-2818261	6	6	Exhaust Sleeve	
M-2818261RK	6	6	Exhaust Sleeve Repair Kit	Includes Gasket and Rivets
M-6I4421	1	1	Spacer Plate	
M-1389381	1	1	Spacer Plate - Undersized	-.003"
M-5P5678-6	1	1	Valve Cover Gasket	
M-5P5678-9	1	1	Valve Cover Gasket	Engine Brake Equipped
M-3044925		1	Valve Cover Isolator	SDP & B5P
M-3B645	20		Plug - Cup	
M-3B623	17		Plug - Cup	

* = Acert and Non-Acert Applications

FUEL SYSTEM

Part #	Quantity		Description	Comment
	3406E	C15		
R-10R0956	6		Fuel Injector - Reman	Ref# 1189027 (NEW)
R-10R0956	6		Fuel Injector - Reman	Ref# 2113022 (NEW)
R-10R2780	6		Fuel Injector - Reman	Ref# 1189035 (NEW)
R-10R8501	6	6	Fuel Injector - Reman	Ref# 2113023 (NEW)
R-10R0956	6	6	Fuel Injector - Reman	Ref# 2113022 (NEW)
R-10R0955		6	Fuel Injector - Reman	Ref# 2113025 (NEW)
R-10R1000		6	Fuel Injector - Reman	Ref# 2295919 (NEW)
R-10R6163		6	Fuel Injector - Reman	Ref# 2943005 (NEW)
R-10R1273		6	Fuel Injector - Reman	Ref# 2321199 (NEW)
R-10R3261		6	Fuel Injector - Reman	Ref# 2490702 (NEW)
R-10R1273		6	Fuel Injector - Reman	Ref# 2490709 (NEW)
R-10R3265		6	Fuel Injector - Reman	Ref# 2530616 (NEW)
M-8S9191		6	Bolt - Injector Clamp	
M-2481394	6	6	Injector O-Ring Kit	
M-1052508	1	1	Priming Pump	Short
M-1375541	1	1	Priming Pump - Hi Cap	Tall

***Refer to ESN and Arrangement for proper injector selection

3406E/C15 PARTS LISTING

LUBRICATION SYSTEM

Part #	Quantity		Description	Comment
	3406E	C15		
M-1330125	1	1	Oil Cooler Core	
M-2237962		1	Oil Cooler Core	ACERT
M-1090077	3	3	Seal O-Ring	
M-4N733	1		Oil Pump	Ref# 0R9448 (verify w/ ESN)
M-6N1931	1		Relief Plunger	
M-2S2760	1		Plunger Spring	
M-1614113	1	1	Oil Pump	Ref# 0R9449
M-6N1931	1	1	Relief Plunger	
M-2S2760	1	1	Plunger Spring	
MCB3400RK	1		Oil Pump Rebuild Kit	For use on 4N733 Pump
M-684497	1		Oil Filler Cap	
M-9L8439	1		Oil Filler Cap	
M-5L2952		1	Oil Filler Cap	
M-4N1151	AR	AR	Oil Pan Gasket	Puzzle Style
M-4N1151-6	AR	AR	Oil Pan Gasket	One Piece Style
M-1685248		1	Oil Pan Isolator	
M-0S1619		8	Bolt (3/8-16 X 3")	Sound Protection Panel
M-0L2070		24	Bolt (3/8-16 X 2.25")	Standard Oil Pan
M-9L9132		24	Washer	Standard Oil Pan
M-2401614		24	Isolator Sleeve	Standard Oil Pan

COOLING SYSTEM

Part #	Quantity		Description	Comment
	3406E	C15		
M-4W4011	1	1	Regulator - 170°	
M-2485513	1	1	Regulator - 180°	
M-2477133	1	1	Regulator - 190°	
M-3S9643	1	1	Regulator Seal	
M-1354925	1		Water Pump	Ref# 10R0483
M-1615719		1	Water Pump	Ref# 10R0484
M-3362213		1	Water Pump	Ref# 10R8660
M-7C9222	1	1	Water Pump Adaptor Plate	Aluminum - Non-ACERT
M-4P2383	1	1	Water Pump Adaptor Plate	Cast Iron - Non-ACERT

3406E/C15 PARTS LISTING

COOLING SYSTEM (cont.)

Part #	Quantity		Description	Comment
	3406E	C15		
M-1293068	1		Water Pump Rebuild Kit**	
M-1293069	1		Water Pump Rebuild Kit**	
M-2672839		1	Water Pump Rebuild Kit**	ACERT
M-3777037		1	Water Pump Rebuild Kit**	
M-8H9789	2	2	Fan Hub Bearing	
M-5S2106	1	1	Fan Hub Seal	
M-7F2122	1	1	Fan Hub O-Ring Seal	
M-8T0644		1	Bolt-Belt Tensioner	General Usage

**Note: Match to pump via serial # & arrangement.

EXHAUST & TURBOCHARGER

Part #	Quantity		Description	Comment
	3406E	C15		
MCB3406EHKT	1	1	Exhaust Hardware Kit	Complete with Port Sleeves (Non-ACERT)
MCBC15HKT		1	Exhaust Hardware Kit	Complete with Port Sleeves (ACERT)
MCB3406ESK	1		Exhaust Stud Kit	Studs & Nuts (Non-ACERT)
MCBC15ESK		1	Exhaust Stud Kit	Studs, Spacers & Nuts (Non-ACERT)
M-1061793	1	1	Exhaust Manifold Stud - 2.36"	
M-1061792	11	11	Exhaust Manifold Stud - 4"	
M-1064159	1	1	Spacer - .532"	
M-1083612	11	11	Spacer - 2"	
M-2N2766	12	12	Locknut	
M-1687800	12		Locknut	
M-5M2894	12	12	Hard Washer	
M-2818261	6	6	Exhaust Sleeve	
M-2818261RK	6	6	Exhaust Sleeve Repair Kit	Includes Gasket and Rivets
M-1965951		1	Turbocharger Assembly	6NZ & 9NZ non-ACERT
M-2410825		1	Turbocharger Installation Set	
M-2321811		1	Turbocharger Assembly	ACERT low pressure
M-2514820		1	Turbocharger Assembly	ACERT high pressure
M-2903986		1	Turbocharger Installation Set	
M-2N2765	4	4	Turbo Mounting Bolt	
M-2N2766	4	4	Turbo Mounting Locknut	
M-3139550		4	Turbo Mounting Stud	ACERT
M-2N9288		4	Turbo Mounting Stud	ACERT
M-1687800		8	Turbo Mounting Locknut	ACERT

3406E/C15 PARTS LISTING

SENSORS

Part #	Quantity		Description	Comment
	3406E	C15		
M-1946722	AR	AR	Sensor - Pressure*	
M-1946724	AR	AR	Sensor - Pressure*	
M-1946725	AR	AR	Sensor - Pressure*	
M-2244536	AR	AR	Sensor - Pressure*	
M-2842728	AR	AR	Sensor - Pressure*	
M-2566453	AR	AR	Sensor - Temperature*	
M-2644297	AR	AR	Sensor - Temperature*	

*refer to ESN usage

GASKET SETS - MCBEE CUSTOM

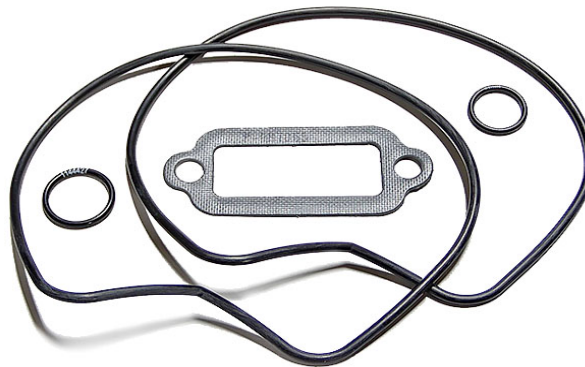
Part #	Quantity		Description	Comment
	3406E	C15		
MCB3406461	1		Overhaul Gasket Set	5EK,6TS
MCB3406462	1		In-Chassis Gasket Set	
MCB3406463	1		Cylinder Head Gasket Set	
MCB3406471	1		Overhaul Gasket Set	1LW,1MM,2WS,5DS,6TS
MCB3406472	1		In-Chassis Gasket Set	
MCB3406473	1		Cylinder Head Gasket Set	
MCBC15091		1	Overhaul Gasket Set	6NZ,9NZ,MBN **Contains M-1685248 Oil Pan Isolator
MCBC15111		1	Overhaul Gasket Set**	
MCBC15092		1	In-Chassis Gasket Set	
MCBC15112		1	In-Chassis Gasket Set**	
MCBC15093		1	Cylinder Head Gasket Set	
MCBC15211		1	Overhaul Gasket Set**	BXS,MXS,NXS **Contains M-1685248 Oil Pan Isolator
MCBC15212		1	In-Chassis Gasket Set**	
MCBC15222		1	In-Chassis Gasket Set	
MCBC15213		1	Cylinder Head Gasket Set	
MCBC15321		1	Overhaul Gasket Set**	SDP **Contains M-1685248 Oil Pan Isolator
MCBC15322		1	In-Chassis Gasket Set**	
MCBC15323		1	Cylinder Head Gasket Set	
MCBC15993	1	1	Cylinder Head Gasket Set	Universal Set - <i>Does Not</i> contain Valve Stem Seals

Note: Injector O-Rings included in all McBee Custom Gasket Sets.

3406E/C15 PARTS LISTING

GASKET SETS - MODULAR

5EK,6TS	Quantity	Description	Comment
M-2088350	1	Air Compressor Set	3406E General Usage
M-1429672	1	Central & Lower Set	
M-3766577	1	Front Structure Set	
M-2481394	6	Fuel Injector Set	
M-1252107	1	Fuel System Set	
M-1415787	1	Oil Cooler Set	
M-2323679	1	Rear Structure Set	
M-2410825	1	Turbocharger Installation Set	
M-1282922	1	Water Pump Installation Set	
M-2088350	1	Air Compressor Set	C15 General Usage
M-2572756	1	Central & Lower Set	
M-2341904	1	Front Structure Set	
M-2481394	6	Fuel Injector Set	
M-2250773	1	Fuel System Set	
M-1891814	1	Oil Cooler Set	
M-2341877	1	Rear Structure Set	
M-2410825	1	Turbocharger Installation Set	
M-2138621	1	Water Pump Installation Set	
M-2800481	1	Air Compressor Set	C15 ACERT General Usage
M-2969949	1	Central & Lower Set	
M-3483681	1	Front Structure Set	
M-2481394	6	Fuel Injector Set	
M-2969932	1	Fuel System Set	
M-3483682	1	Oil Cooler Set	
M-2853200	1	Rear Structure Set	
M-2903986	1	Turbocharger Installation Set	
M-2997436	1	Water Pump Installation Set	



INTERSTATE-MCBEE, LLC LIMITED GENERAL PRODUCTS WARRANTY

Interstate-McBee, LLC LIMITED General Products Warranty

- All Fuel Injection, New & Remanufactured
- Engine Management Systems & Components

COVERAGE

The parts furnished by Interstate-McBee are warranted to be free from defects in material and workmanship under normal use and service for a period of twelve (12) months (unlimited miles and hours), from date of first installation in an engine. This warranty applies to all owners in the chain of distribution, i.e. distributor, dealer, original owner, until the end of the respective periods of coverage and shall not apply to subsequent owners.

This warranty does not apply to parts provided by Interstate-McBee on a no-charge basis. In no event shall this warranty extend beyond twenty four (24) months from date of sale or manufacture.

INTERSTATE-MCBEE RESPONSIBILITIES

The obligation of Interstate-McBee under this warranty, statutory or otherwise, is limited to the replacement or repair of Interstate-McBee parts, which our inspection discloses to our satisfaction to have been defective. Repair will be performed at our factory in Cleveland, OH or other Interstate-McBee approved facility. Proof of purchase is required.

OWNER'S RESPONSIBILITIES

Owner is responsible for the operation and maintenance of the engine as specified in the APPLICABLE O.E.M. OPERATION AND MAINTENANCE MANUALS. Owner must give notice within (30) days of any suspected failure and before expiration of applicable warranty to be considered warrantable. Owner will provide alleged defective and associated parts for examination by Interstate-McBee and, if requested, return same F.O.B. Cleveland, Ohio. Interstate-McBee further reserves the right to examine any engine subject to a claim under this warranty. Owner is responsible for all costs, including, but not limited to, repairs made to items other than the engine in which the parts are installed, "downtime" expenses and all business costs and losses resulting from a warrantable failure. Copies of all work orders and invoices for repairs to the engine must accompany the claim. Additionally, on electronically controlled engines a complete Electronic Control Module (ECM) report (Extraction, Download) must also accompany the claim. ALL CLAIMS MUST BE FILED ONLINE AT WWW.INTERSTATE-MCBEE.COM.

WARRANTY LIMITATIONS

Interstate-McBee is not responsible for failure resulting from owner or operator abuse or neglect, such as, but not limited to: operation without adequate coolant, fuel or lubricants; over-speeding; lack of maintenance of lubricating system, coolant or air intake systems; improper storage, or starting. Interstate-McBee is not responsible for failures resulting from improper repair or installation, for parts that have been altered or for parts not approved by Interstate-McBee. This warranty does not apply to parts furnished on a no charge basis. Interstate-McBee does not warrant parts supplied by Interstate-McBee which bear the name and or trademark of another company. These parts are warranted by their manufacturers and not by Interstate-McBee. In no event shall this warranty extend beyond (twenty four (24) months from the date of sale. THERE ARE NO WARRANTIES EXPRESSED, IMPLIED OR STATUTORY, FOR THE PARTS NAMED HEREIN BEFORE, MADE BY INTERSTATE-MCBEE OTHER THAN SET FORTH HEREIN. We neither assume nor authorize any other persons to assume for us any other liability in connection with our products. INTERSTATE-MCBEE SHALL NOT BE RESPONSIBLE FOR ANY OTHER CONSEQUENTIAL DAMAGES OR CONTINGENT LIABILITIES. Further, in no event shall Interstate-McBee bear any responsibility for any damages, which exceed the then available aggregate coverage provided under the terms and conditions of its product liability policy.

This warranty shall be interpreted, governed and enforced in accordance with the laws of the State of Ohio, U.S.A. (For products not covered herein, see Interstate-McBee's Extended Warranty). Any actions or proceedings relating to this warranty must be filed or commenced within three (3) months of the alleged breach. If any of these warranty provisions or portions thereof is prohibited by law or by any court of competent jurisdiction, in any locality, its invalidity or unenforceability shall not affect the validity or the enforceability of any other warranty provisions or portions thereof.

INTERSTATE-McBEE, LLC 4901 LAKESIDE AVENUE, CLEVELAND, OHIO 44114-3996

Rev.: C Date: 3/11/14 Policy No.: Q-POL-75-0211

INTERSTATE-MCBEE, LLC LIMITED GENERAL PRODUCTS WARRANTY

Interstate-McBee, LLC LIMITED Extended Warranty
• Engine Parts

COVERAGE

Diesel Engine

New engine parts furnished by Interstate-McBee are warranted to be free from defects in material and workmanship under normal use and service for a period of twenty-four (24) months from the date of installation, without mileage or hour limitation. This warranty applies to all owners in the chain of distribution, i.e. distributor, dealer, original owner, until the end of the respective periods of coverage and shall not apply to subsequent owners.

Natural Gas or Methane Engine and Prime Power Generation

New engine parts furnished by Interstate-McBee are warranted to be free from defects in material and workmanship under normal use and service, for a period of twenty four (24) months from the date of installation with the exception of valve train components which are warranted for twelve (12) months from the date of installation. This warranty applies to all owners in the chain of distribution, i.e. distributor, dealer, original owner, until the end of the respective periods of coverage and shall not apply to subsequent owners.

INTERSTATE-MCBEE RESPONSIBILITIES

Interstate-McBee will pay only for parts, labor and fluids needed to repair damages directly resulting from an above defined warranty failure to the functional condition existing immediately prior to the failure, including progressive damage to the engine in which the warrantable part was installed, provided Interstate-McBee's inspection of said failed part or parts discloses to our satisfaction to have been defective. Labor cost will be paid but not to exceed published flat rates times at Interstate-McBee's standard hourly rate. No overtime or holiday rates will be allowed. Only new or rebuilt Interstate-McBee or Interstate-McBee approved parts will be used in making the repair.

OWNER'S RESPONSIBILITIES

Owner is responsible for the operation and maintenance of the engine as specified in the APPLICABLE O.E.M. OPERATION AND MAINTENANCE MANUALS. Owner must give notice within (30) days of any suspected failure and before expiration of applicable warranty to be considered warrantable. Owner will provide alleged defective and associated parts for examination by Interstate-McBee and, if requested, return same F.O.B. Cleveland, Ohio. Additionally, a complete Electronic Control Module report must accompany the claim. Interstate-McBee further reserves the right to examine any engine subject to a claim under this warranty. Approved warranty work is to be performed by an authorized Interstate-McBee Distributor or Dealer or other Interstate-McBee approved facility. Copies of all work orders and invoices for repairs to the engine must accompany the claim. Owner is responsible for all costs, including, but not limited to, repairs made to items other than the engine in which the parts are installed, "downtime" expenses and all business costs and losses resulting from a warrantable failure. ALL CLAIMS MUST BE FILED ONLINE AT WWW.INTERSTATE-MCBEE.COM

WARRANTY LIMITATIONS

Interstate-McBee is not responsible for failure resulting from owner or operator abuse or neglect, such as, but not limited to: operation without adequate coolant, fuel or lubricants; overfueling; overspeeding; lack of maintenance of lubricating, coolant or air intake systems; improper storage, starting, warm-up, run-in or shut down practices. Interstate-McBee is not responsible for failures resulting from improper repair or installation, for parts that have been altered or for parts not approved by Interstate-McBee. This warranty does not apply to parts furnished on a no charge basis. Interstate-McBee does not warrant parts supplied by Interstate-McBee which bear the name and trademark of another company. These parts are warranted by their manufacturers and not Interstate-McBee. In no event shall this warranty extend beyond (36) months from the date of sale. THERE ARE NO WARRANTIES EXPRESSED, IMPLIED OR STATUTORY, FOR THE PARTS NAMED HEREIN BEFORE, MADE BY INTERSTATE-MCBEE OTHER THAN SET FORTH HEREIN. We neither assume nor authorize any other persons to assume for us any other liability in connection with our products. INTERSTATE-MCBEE SHALL NOT BE RESPONSIBLE FOR ANY OTHER CONSEQUENTIAL DAMAGES OR CONTINGENT LIABILITIES. Further, in no event shall Interstate-McBee bear any responsibility for any damages, which exceed the then available aggregate coverage provided under the terms and conditions of its product

This warranty shall be interpreted, governed and enforced in accordance with the laws of the State of Ohio, U.S.A. (For products not covered herein, see Interstate-McBee's General Product Warranty.) Any actions or proceedings relating to this warranty must be filed or commenced within three (3) months of the alleged breach. If any of these warranty provisions or portions thereof prohibited by law or by any court of competent jurisdiction, in any locality, its invalidity or unenforceability shall not affect the validity or enforceability of any other warranty provisions or portions thereof.

INTERSTATE-MCBEE L.L.C, 4901 LAKESIDE AVENUE, CLEVELAND, OHIO 44114-3996

Rev.: G Date: 3/13/14 Policy No.: Q-POL-82-0159

35



For Excellence in Export



INTERSTATE-McBEE

www.interstate-mcbee.com



World Headquarters

5300 Lakeside Ave.
Cleveland, OH 44114
PH: 216-881-0015
FAX: 216-881-0805

E-mail: sales@interstate-mcbee.com

California

13137 Arctic Circle
Santa Fe Springs, CA 90670
PH: 562-356-5414
FAX: 562-926-2452

Florida

9955 NW 58th Street
Doral, FL 33178
PH: 305-863-6650
FAX: 305-863-6272

Texas

1755 Transcentral Ct.
Suite 200
Houston, TX 77032
PH: 281-645-7168
FAX: 281-443-0202

“Quality Without Compromise”

Serving the Diesel and Natural Gas Industries for over 70 years