



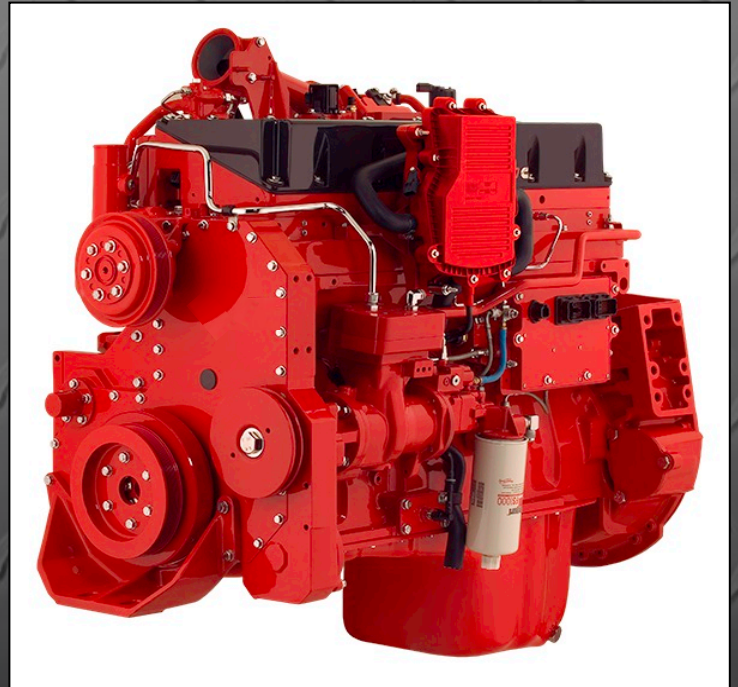
# INTERSTATE-McBEE



CPL Reference Engine Chart for

## Cummins®

M11 – ISM - QSM  
Engine Applications



INTERSTATE-McBEE, LLC

5300 Lakeside Avenue • Cleveland, Ohio 44114 USA

216-881-0015 • Toll Free: 1-800-321-4234 • Fax: 216-881-0805

[www.interstate-mcbee.com](http://www.interstate-mcbee.com) • E-mail: [sales@interstate-mcbee.com](mailto:sales@interstate-mcbee.com)

All manufacturer's names, symbols and descriptions are for reference only  
and it is not implied that any item listed is a product of said manufacturer  
©Cummins is a registered trademark of Cummins Inc.

# M11-ISM-QSM CPL Engine Reference



INTERSTATE-McBEE



CPL #	Model	APP Code	ECM	In-Frame Kit	Piston Kit	Liner kit	Injector
1827	M11-208/310/330E	A		M-4025297*	MCB4025161*	M-3803703	R-3411756
1828	M11-370E	A		M-4025297*	MCB4025161*	M-3803703	R-3411756
1829	M11-310ESP II	A		M-4025297*	MCB4025161*	M-3803703	R-3411756
1830	M11-280E	A		M-4025297*	MCB4025161*	M-3803703	R-3411752
1841	M11-330/350/370E	A		M-4025297*	MCB4025161*	M-3803703	R-3411752
1855	M11-330E	A		M-4025297*	MCB4025161*	M-3803703	R-3411752
1856	M11-370E	A		M-4025297*	MCB4025161*	M-3803703	R-3411752
1857	M11-ESP II-315	A		M-4025297*	MCB4025161*	M-3803703	R-3411752
1875	M11-280/330E	A		M-4025297*	MCB4025161*	M-3803703	R-3411752
1885	M11-400E	A		M-4025297*	MCB4025161*	M-3803703	R-3411752
<b>1897§</b>	MTA11-C 330/350	C		M-4025297*	MCB4025161*	M-3803703	N/A
1973	M11-400E	A		M-4025297*	MCB4025161*	M-3803703	R-3411752
1991	M11-370E	A		M-4025297*	MCB4025161*	M-3803703	<i>In Development</i>
1992	M11-370E	A		M-4025297*	MCB4025161*	M-3803703	<i>In Development</i>
<b>1993§</b>	MTA11-C330	C		M-4025297*	MCB4025161*	M-3803703	N/A
2012	M11-380	A		M-4025297*	MCB4025161*	M-3803703	R-3411754
2036	M11-330E PLUS	A		M-4025297*	MCB4025161*	M-3803703	R-3411753
2037	M11-400E PLUS	A		M-4025297*	MCB4025161*	M-3803703	R-3411753
2040	M340E20	EURO		M-4025297*	MCB4025161*	M-3803703	R-3411754
2041	M305E20	EURO		M-4025297*	MCB4025161*	M-3803703	R-3411754
2042	M305ESP	EURO		M-4025297*	MCB4025161*	M-3803703	R-3411754
2097	M250E	EURO		M-4025297*	MCB4025161*	M-3803703	R-3411752
2099	M305E21	EURO		M-4025297*	MCB4025161*	M-3803703	R-3411754
<b>2119§</b>	MTA11-C300	C		M-4025297*	MCB4025161*	M-3803703	N/A
2140	M11-330E PLUS	A		M-4025297*	MCB4025161*	M-3803703	R-3411755
2141	M11-330E PLUS	A		M-4025297*	MCB4025161*	M-3803703	R-3411755
<b>2165§</b>	MTA11-385G	G		M-4025297*	MCB4025161*	M-3803703	N/A
2178	M11-450E PLUS	A		M-4025297*	MCB4025161*	M-3803703	R-3411753
2199	ISM-335	A	CM570	M-4090008	M-4025158	M-3803703	R-3411756
2200	ISM-450	A	CM570	M-4090008	M-4025158	M-3803703	R-3411756
2201	ISM-330	A		M-4025297*	MCB4025161*	M-3803703	R-3411758
2204	MTA11-ER	R		M-4025297*	MCB4025161*	M-3803703	R-3411754
2207	MTA11-C PLUS	C		M-4025297*	MCB4025161*	M-3803703	R-3411757
<b>2336§</b>	MTA11-C 290/310/320	C		M-4025297*	MCB4025161*	M-3803703	N/A
2350	ISM11M-450	A	CM570	M-4090008	M-4025158	M-3803703	R-3411756
<b>2363§</b>	MTA11-C 315/350	C		M-4025297*	MCB4025161*	M-3803703	N/A
2370	M11-330E PLUS	A		M-4025297*	MCB4025161*	M-3803703	R-3411753
2371	M11-400E PLUS	A		M-4025297*	MCB4025161*	M-3803703	R-3411753
2376	ISM-400			M-4090008	M-4025158	M-3803703	<i>In Development</i>

# M11-ISM-QSM CPL Engine Reference



INTERSTATE-McBEE



CPL #	Model	APP Code	ECM	In-Frame Kit	Piston Kit	Liner kit	Injector
<b>2378§</b>	MTA11-C320	C		M-4025297*	MCB4025161*	M-3803703	N/A
2425	M11-330E PLUS	A		M-4025297*	MCB4025161*	M-3803703	R-3411758
2443	QSM-M 580/635	M		N/A	N/A	M-3803703	In Development
2477	ISM-450	A	CM570	M-4090008	M-4025158	M-3803703	R-3411756
<b>2503§</b>	MTA11-C300	C		M-4025297*	MCB4025161*	M-3803703	N/A
2539	M305E20	EURO		M-4025297*	MCB4025161*	M-3803703	R-3411754
2540	M305ESP22	EURO		M-4025297*	MCB4025161*	M-3803703	R-3411754
2541	M340E20	EURO		M-4025297*	MCB4025161*	M-3803703	R-3411754
2542	M380E	A		M-4025297*	MCB4025161*	M-3803703	R-3411754
2543	M450E	A		M-4025297*	MCB4025161*	M-3803703	R-3411754
2562	ISM-335	A	CM570	M-4090008	M-4025158	M-3803703	R-3411756
2563	ISM-450	A	CM570	M-4090008	M-4025158	M-3803703	R-3411756
2576	ISM-400	A	CM570	M-4090008	M-4025158	M-3803703	R-3411756
2607	ISM-330	A	CM570	M-4090008	M-4025158	M-3803703	R-3411756
2608	ISM-450	A	CM570	M-4090008	M-4025158	M-3803703	R-3411756
2610	ISM-425	A		M-4090008	M-4025158	M-3803703	R-3411756
2611	ISM-330	A		M-4090008	M-4025158	M-3803703	R-3411756
2612	ISM-450	A		M-4090008	M-4025158	M-3803703	R-3411756
2614	ISM-500	A		M-4090008	M-4025158	M-3803703	R-3411756
2615	ISM-425	A		M-4090008	M-4025158	M-3803703	R-3411756
2725	ISM	A	CM876	M-4918787	M-4089386	M-4089388	In Development
2727	ISM	A	CM876	M-4918787	M-4089386	M-4089388	In Development
2728	ISM	A	CM876	M-4918787	M-4089386	M-4089388	In Development
2729	ISM	A	CM876	M-4918787	M-4089386	M-4089388	In Development
2730	ISM	A	CM876	M-4918787	M-4089386	M-4089388	In Development
2731	ISM	A	CM876	M-4918787	M-4089386	M-4089388	In Development
2800	ISM	A	CM876	M-4918787	M-4089386	M-4089388	In Development
2809	M440E20	EURO		M-4025297*	MCB4025161*	M-3803703	In Development
2811	M410E20	EURO		M-4025297*	MCB4025161*	M-3803703	R-3411754
2812	M410E20	EURO		M-4025297*	MCB4025161*	M-3803703	R-3411754
2817	QSM11-M	M		N/A	N/A	M-3803703	In Development
2828	QSM11C-330	C		MCIF4024938	M-4024938	M-3803703	R-4026222
2829	QSM11C-350/400	C		MCIF4024938	M-4024938	M-3803703	R-4026222
2830	ISM-335/410	A		N/A	N/A	M-3803703	R-4061851
<b>2916§</b>	MTA11-350	C		M-4025297*	MCB4025161*	M-3803703	N/A
<b>2917§</b>	MTA11-C300	C		M-4025297*	MCB4025161*	M-3803703	N/A
<b>2918§</b>	M11-C	C		M-4025297*	MCB4025161*	M-3803703	N/A
3280	ISM	A	CM876	M-4918787	M-4089386	M-4089388	In Development
3281	ISM	A	CM876	M-4918787	M-4089386	M-4089388	In Development

# M11-ISM-QSM CPL Engine Reference



INTERSTATE-McBEE



CPL #	Model	APP Code	ECM	In-Frame Kit	Piston Kit	Liner kit	Injector
3330	ISM	A	CM876	M-4918787	M-4089386	M-4089388	<i>In Development</i>
3707	QSM11	C		M-2882008	M-4089865	M-3803703	R-4026222
8062	QSM11G-470	G		MCIF4024938	M-4024938	M-3803703	R-4026222
8271	ISM-450	A	CM875	M-4918787	M-4089386	M-4089388	<i>In Development</i>
8272	ISM-450	A	CM875	M-4918787	M-4089386	M-4089388	<i>In Development</i>
8273	ISM-330	A	CM875	M-4918787	M-4089386	M-4089388	<i>In Development</i>
8274	ISM-330	A	CM875	M-4918787	M-4089386	M-4089388	<i>In Development</i>
8309	ISM-330	A	CM875	M-4918787	M-4089386	M-4089388	<i>In Development</i>
8363	QSM11M	M		N/A	N/A	M-3803703	R-3411845
8377	ISM-450	A	CM875	M-4918787	M-4089386	M-4089388	<i>In Development</i>
8409	QSM11C-290	C		MCIF4024938	M-4024938	M-3803703	R-4026222
8427	ISM-330	A	CM875	M-4918787	M-4089386	M-4089388	R-4902925
8471	QSM11C-375	C		M-2882008	M-4089865	M-3803703	<i>In Development</i>
8495	QSM11C	C		M-2882008	M-4089865	M-3803703	<i>In Development</i>
8503	ISM-450	A	CM875	M-4918787	M-4089386	M-4089388	<i>In Development</i>
8504	ISM-450	A	CM875	M-4918787	M-4089386	M-4089388	<i>In Development</i>
8506	ISM-330	A	CM875	M-4918787	M-4089386	M-4089388	<i>In Development</i>
8543	QSM11C-350	C		M-2882008	M-4089865	M-3803703	<i>In Development</i>
8544	QSM11C	C		M-2882008	M-4089865	M-3803703	<i>In Development</i>
8545	QSM11C	C		M-2882008	M-4089865	M-3803703	<i>In Development</i>
8546	QSM11C	C		M-2882008	M-4089865	M-3803703	<i>In Development</i>
8556	ISM-330	A	CM875	M-4918787	M-4089386	M-4089388	<i>In Development</i>
8557	ISM-450	A	CM875	M-4918787	M-4089386	M-4089388	<i>In Development</i>
8558	ISM-500	A	CM875	M-4918787	M-4089386	M-4089388	<i>In Development</i>
8559	ISM-330	A	CM875	M-4918787	M-4089386	M-4089388	<i>In Development</i>
8560	ISM-330	A	CM875	M-4918787	M-4089386	M-4089388	R-3408530
8561	ISM-330	A	CM875	M-4918787	M-4089386	M-4089388	<i>In Development</i>
8562	ISM-450	A	CM875	M-4918787	M-4089386	M-4089388	<i>In Development</i>
8563	ISM-500	A	CM875	M-4918787	M-4089386	M-4089388	<i>In Development</i>
8572	ISM-500	A	CM875	M-4918787	M-4089386	M-4089388	<i>In Development</i>
8608	QSM11C-290	C		M-2882008	M-4089865	M-3803703	<i>In Development</i>
8753	QSM11M-670	M		MCIF4024938	M-4024938	M-3803703	<i>In Development</i>

**APP (Application) Codes :** A = Automotive/On-Highway, C = Construction, EURO = European, G = Generator, M = Marine, R = Rail

**§ = STC (Step Timing Control) Engine**

\*=This item is currently not available for sale, installation, or use in the state of California until the applicable regulatory approvals are granted by the California Air Resources Board



# NOTES

---

---

---

---

---

---

---

---

---

---

---

---

---

---

---

---

---

---

---

---

---

---

---

---

---

---

---

---

---

---



**For Excellence in Export**



**INTERSTATE-McBEE**

**[www.interstate-mcbee.com](http://www.interstate-mcbee.com)**



**World Headquarters**

5300 Lakeside Ave.  
Cleveland, OH 44114  
PH: 216-881-0015  
FAX: 216-881-0805

E-mail: [sales@interstate-mcbee.com](mailto:sales@interstate-mcbee.com)

**California**

13137 Arctic Circle  
Santa Fe Springs, CA 90670  
PH: 562-356-5414  
FAX: 562-926-2452

**Florida**

9955 NW 58<sup>th</sup> St.  
Doral, FL 33178  
PH: 305-863-6650  
FAX: 305-863-6272

**Texas**

1755 Transcentral Ct.  
Suite 200  
Houston, TX 77032  
PH: 281-645-7168  
FAX: 281-443-0202

*“Quality without Compromise”*

**Serving the Diesel and Natural Gas Industries for over 70 years**